

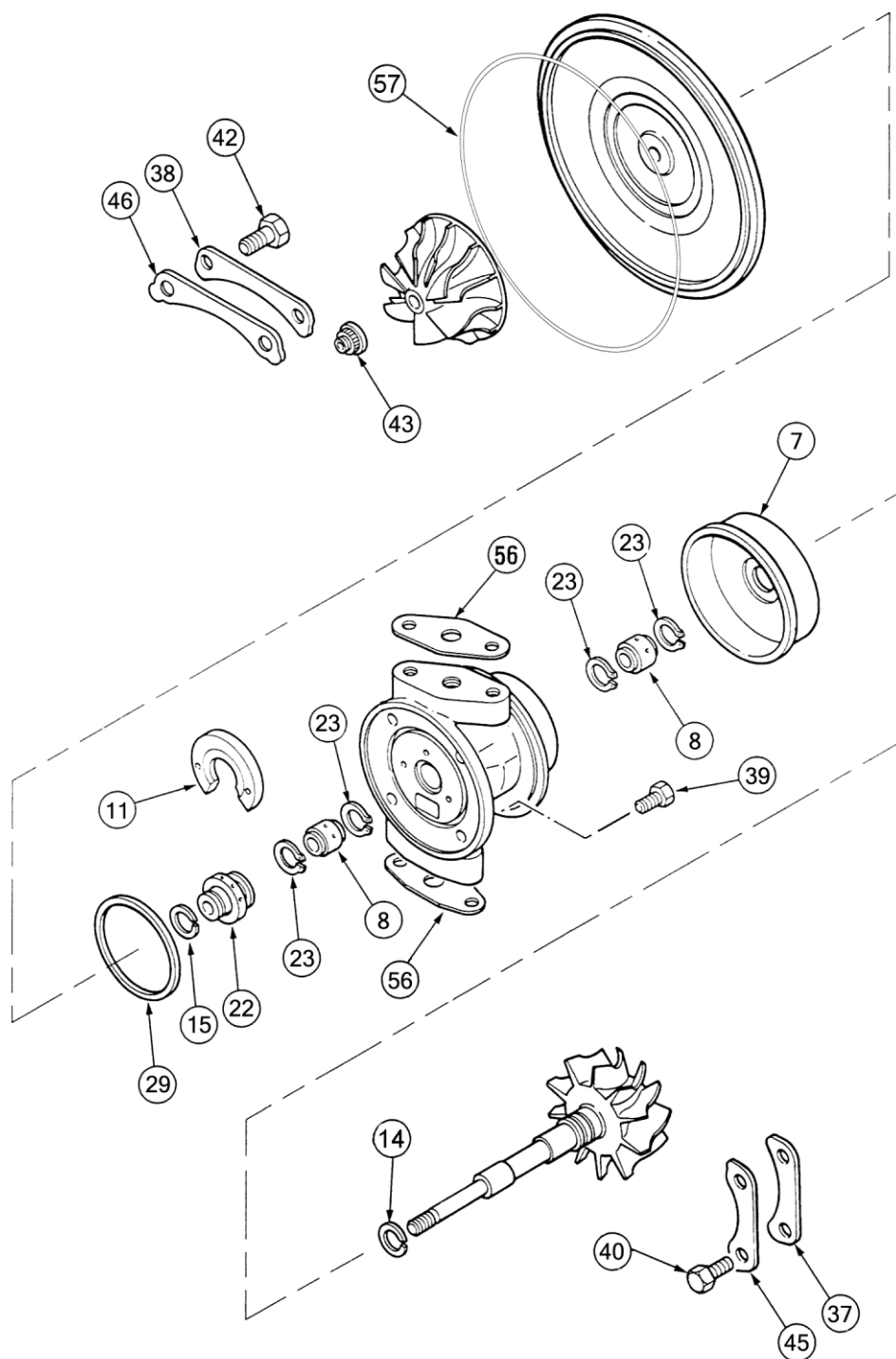
Garrett

T3

Type Turbos

T3 Type (Dynamic)

Common Service Parts



T3 Type (Dynamic)

Repair Kits and Service parts

All parts are available for purchase as individual components
or in the following popular Repair Kits

Key	Part Number	Description	Qty in Turbo	1100-030-750	1100-030-760	1100-030-765
8	1100-040-100	Journal Bearing	2	2	2	
11	1100-040-320	Thrust Bearing	1	1	1	1
14	1100-040-160	Piston Ring T/End	1	1	1	
15	1100-040-170	Piston Ring Comp.	1	1	1	1
22	1100-040-203	Thrust Collar	1		1	1
23	1100-040-140	Retaining Ring J-Brg	4	4	4	4
29	1100-040-150	O Ring (B/Hsg) Square	1	1	1	1
39	1100-030-561	Bolt (T3 Seal Plate) Patched	4	4	4	4
43	1100-030-351	Shaft Nut (LHT).	1	1	1	1
49	1100-030-395	Actuator Clip T3	1	1	1	1
57	1100-030-790	Gasket (T3) Seal Plate to Comp	1	1	1	1

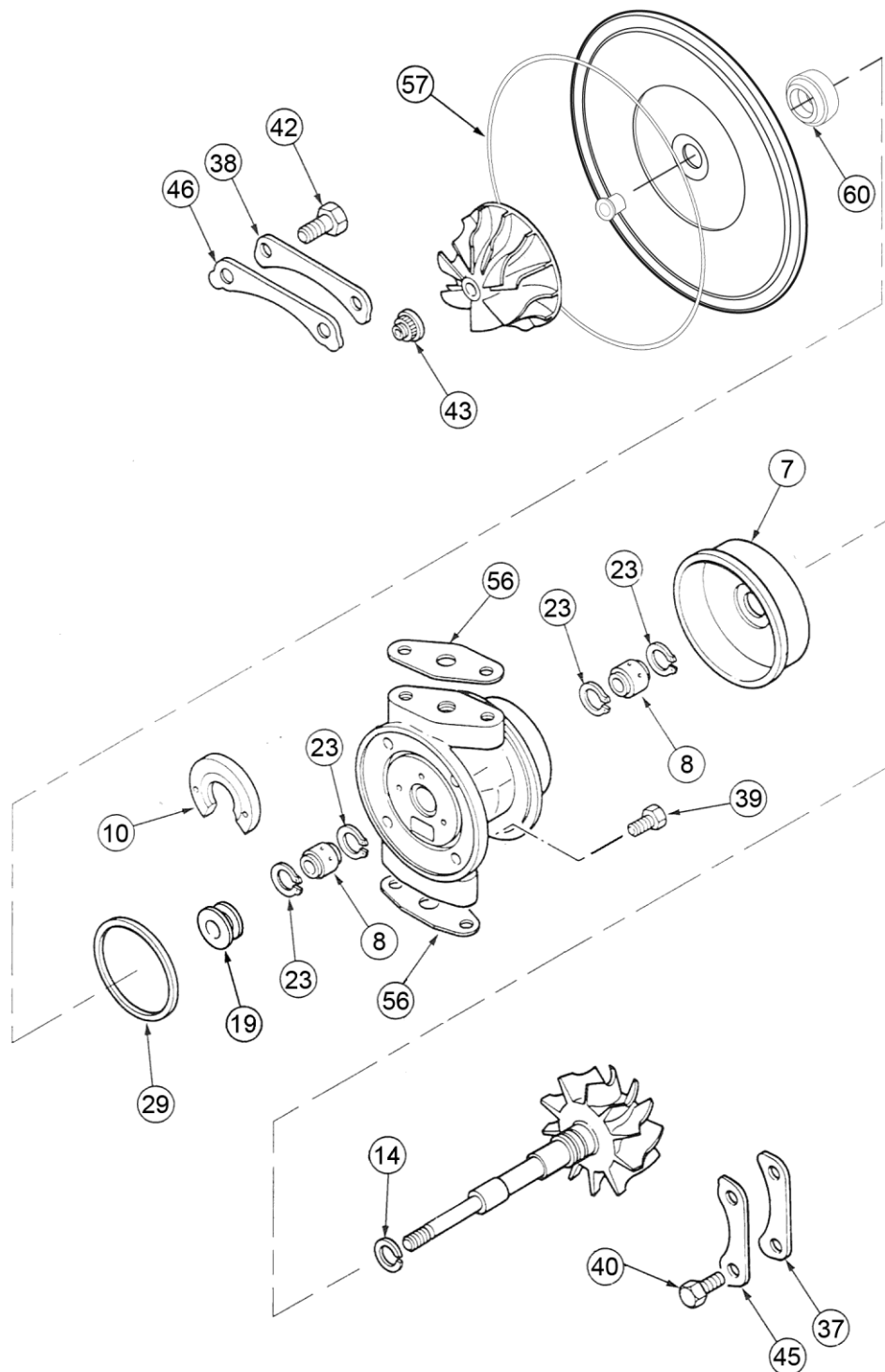
Description of Repair Kits available

1100-030-750	Repair Kit (Minor)
1100-030-760	Repair Kit (Minor) with Thrust Collar
1100-030-765	Repair Kit (Minor) No Journal Bearing

For oversize bearings and piston rings, see Page 24

T3 Type (Carbon Seal)

Common Service Parts



T3 Type (Carbon Seal)

Repair Kits and Service parts

All parts are available for purchase as individual components
or in the following popular Repair Kits

Key	Part Number	Description	Qty in Turbo	1100-030-752	1100-030-762
8	1100-040-100	Journal Bearing	2	2	2
10	1100-040-320	Thrust Bearing	1	1	1
14	1100-040-160	Piston Ring T/End	1	1	1
19	1100-040-202	Thrust Flinger (Carb Seal)	1		1
23	1100-040-140	Retaining Ring J-Brg	4	4	4
29	1100-040-150	O Ring (B/Hsg) Square	1	1	1
39	1100-030-561	Bolt (Seal Plate) Patched	4	4	4
43	1100-030-351	Shaft Nut (LHT).	1	1	1
49	1100-030-395	Actuator Clip T3	1	1	1
57	1100-030-790	Gasket Seal Plate to Comp	1	1	1
60	1100-030-270	Carbon Seal T3/TO4B	1	1	1

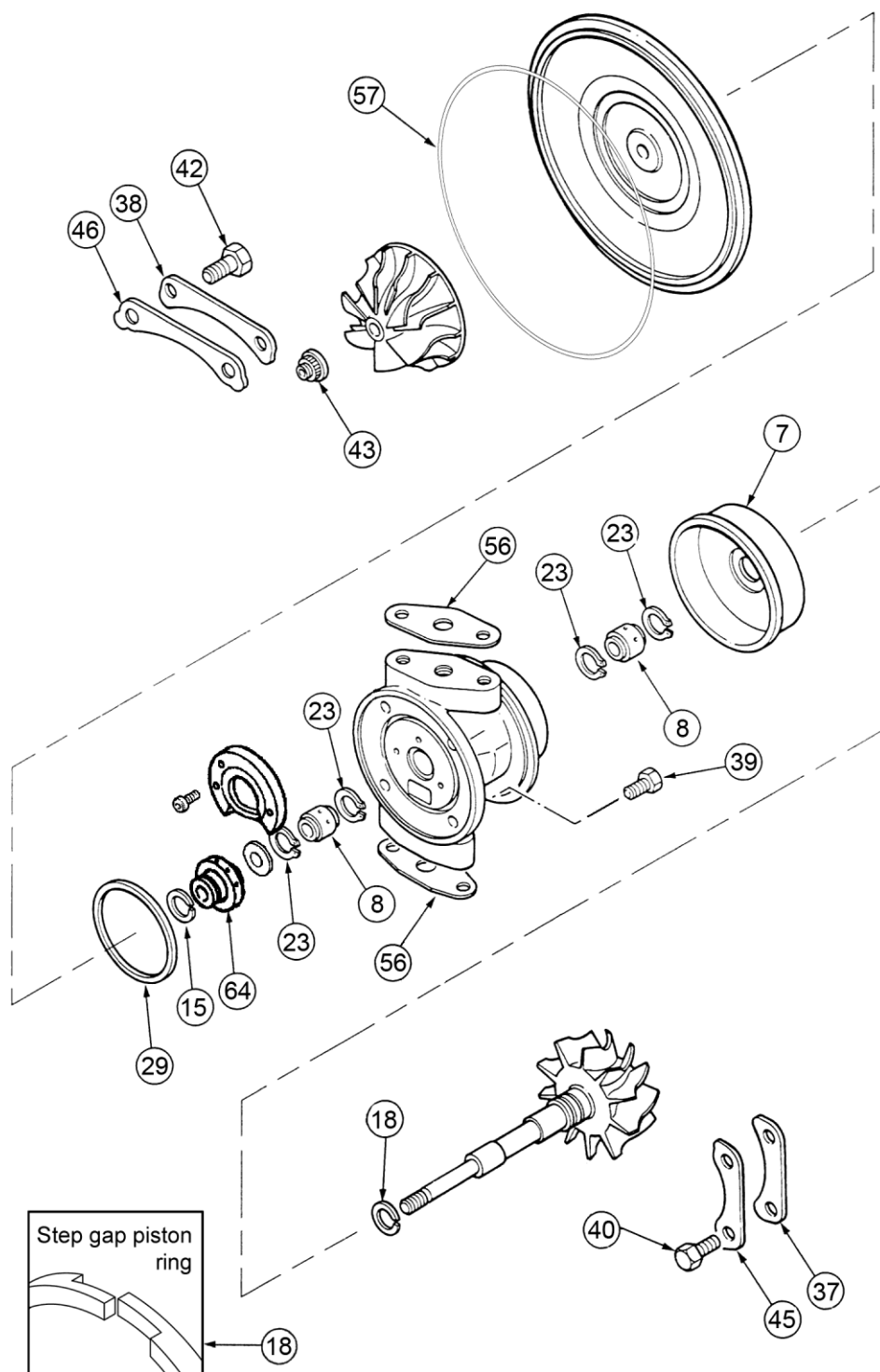
Description of Repair Kits available

1100-030-752 Repair Kit (Minor)
1100-030-762 Repair Kit (Minor) with Thrust Flinger

For oversize bearings and piston rings, see Page 24

T3 Type (Dynamic Seal)

Performance Parts & Upgrade Kits



T3 Type (Dynamic Seal)

Performance Parts & Upgrade Kits

As well as supplying the basic 360 degree kit, Melett also offers the following upgrade kits which offer excellent value for money in comparison to buying the individual piece parts.

Key	Part Number	Description	Qty in Turbo	1100-030-751	1100-030-755	1100-030-766
8	1100-040-100	Journal Bearing	2	2	2	
14	1100-040-160	Piston Ring T/End	1	1		
15	1100-040-170	Piston Ring Comp.	1	1	1	1
18	1100-040-162	Piston Ring Performance	1		1	1
23	1100-040-140	Retaining Ring J-Brg	4	4	4	4
29	1100-040-150	O Ring (B/Hsg) Square	1	1	1	1
39	1100-030-561	Bolt (T3 Seal Plate) Patched	4	4	4	4
43	1100-030-351	Shaft Nut (LHT).	1	1	1	1
49	1100-030-395	Actuator Clip T3	1	1	1	1
57	1100-030-790	Gasket (T3) Seal Plate to Comp	1	1	1	1
64	1100-040-751 See Notes Below	Screw Thrust Bearing (Patched)	3	3	3	3
		Thrust Bearing 360°	1	1	1	1
		Thrust Flinger 360°	1	1	1	1
		Thrust Washer 360°	1	1	1	1

Notes

1. The 360 degree thrust kit is only sold as the 4 part kit (thrust bearing, collar, spacer and screws). All parts must be used together to give optimal performance.
2. 360 degree kit replaces standard thrust bearing and collar
3. 360 degree thrust bearing can be secured by drilling and tapping into bearing housing. Care should be taken when drilling into water cooled bearing housing to ensure water cavity is not broken into.

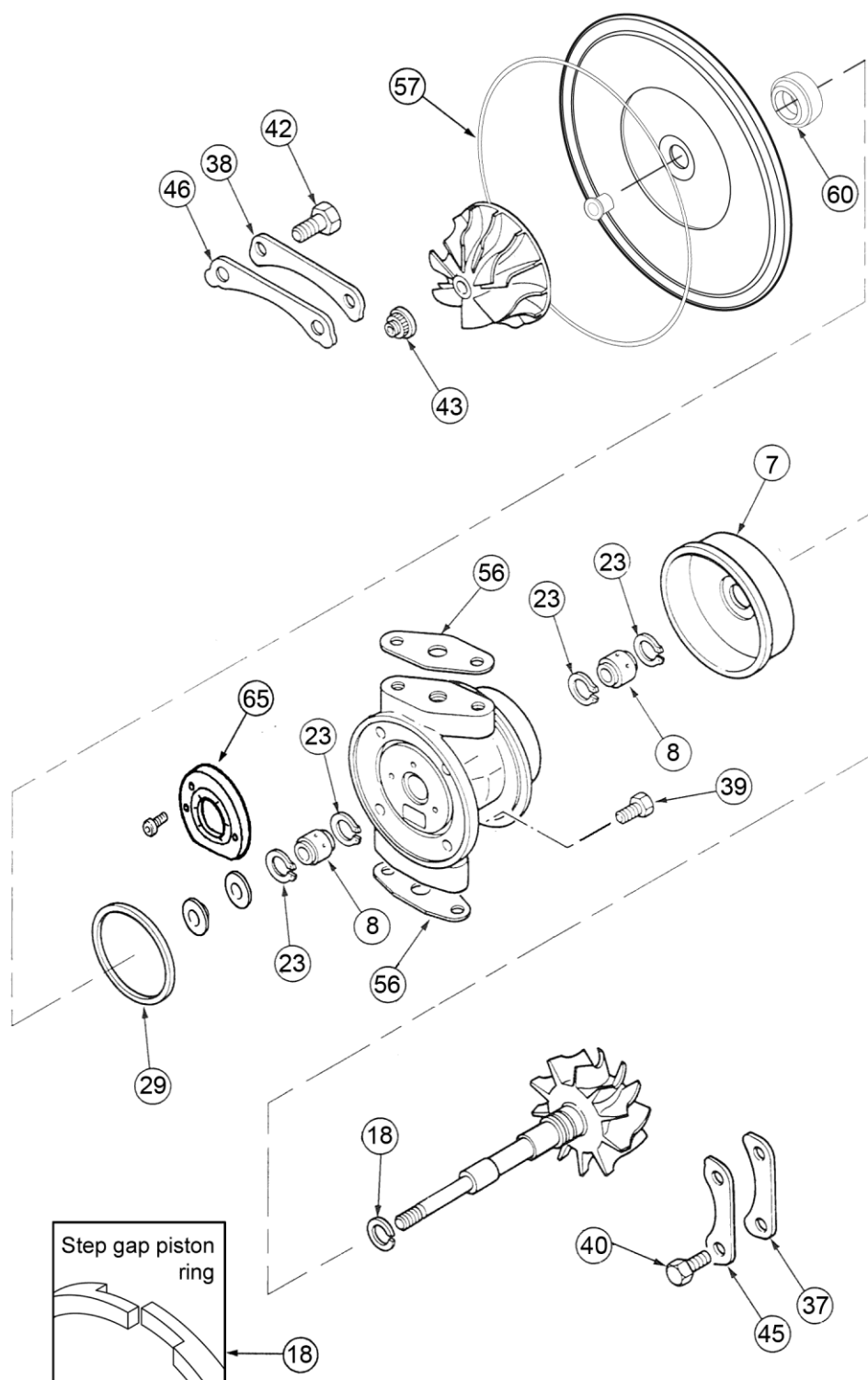
Description of Repair Kits available

1100-030-751	Upgrade Kit T3 (Minor 360°)
1100-030-755	Upgrade Kit T3 (360° inc Step Gap Ring)
1100-030-766	Upgrade Kit T3 (360° inc Step Gap Ring No Journal Bearing)
1100-040-751	Upgrade Thrust Kit T3/04 360°

For oversize bearings and piston rings, see Page 24

T3 Type (Carbon Seal)

Performance Parts & Upgrade Kits



T3 Type (Carbon Seal)

Performance Parts & Upgrade Kits

As well as supplying the basic 360 degree kit, Melett also offers the following upgrade kits which offer excellent value for money in comparison to buying the individual piece parts.

Key	Part Number	Description	qty in Turbo	1100-030-753	1100-030-756
8	1100-040-100	Journal Bearing	2	2	2
14	1100-040-160	Piston Ring T/End	1	1	
18	1100-040-162	Piston Ring Performance	1		1
23	1100-040-140	Retaining Ring J-Brg	4	4	4
29	1100-040-150	O Ring (B/Hsg) Square	1	1	1
39	1100-030-561	Bolt (Seal Plate) Patched	4	4	4
43	1100-030-351	Shaft Nut (LHT).	1	1	1
49	1100-030-395	Actuator Clip T3	1	1	1
57	1100-030-790	Gasket Seal Plate to Comp	1	1	1
60	1100-030-270	Carbon Seal T3/TO4B	1	1	1
65	1100-040-752 See Notes Below	Screw Thrust Bearing (Patched)	3	3	3
		Thrust Bearing 360°	1	1	1
		Thrust Collar 360°	1	1	1

Notes

- The 360 degree carbon seal thrust kit is only sold as the 3 part kit (thrust bearing, collar, and screws). All parts must be used together to give optimal performance.
- 360 degree kit replaces standard thrust bearing and collar
- 360 degree thrust bearing can be secured by drilling and tapping into bearing housing. Care should be taken when drilling into water cooled bearing housing to ensure water cavity is not broken into.

Description of Repair Kits available

1100-030-753	Upgrade Kit T3 (Minor 360°)
1100-030-756	Upgrade Kit T3 (360° inc Step Gap Ring)
1100-040-752	Upgrade Thrust Kit T3/04 360°

For oversize bearings and piston rings, see Page 24

T3 Type (Oversize Repair Parts)

Journal Bearings

T3 T04B/E		
Standard	Standard	1100-040-100
+ 0.005"	- 0.005"	1100-040-110
+ 0.005"	Standard	1100-040-114
Standard	- 0.005"	1100-040-117
+ 0.010"	- 0.010"	1100-040-120
+ 0.010"	Standard	1100-040-124
Standard	- 0.010"	1100-040-127
+ 0.005"	- 0.010"	1100-040-130
+ 0.010"	- 0.005"	1100-040-131

Piston Rings

T3 T04B/E		Turbine	Compressor
OD	Width		
Standard	Standard	1100-040-160	
Standard	Standard	1100-040-161	
+ 0.010"	Standard	1100-040-180	
Standard	+ 0.010"	1100-040-185	
+ 0.010"	+ 0.010"	1100-040-184	
Standard	+ 0.020"	1100-040-183	
+ 0.010"	+ 0.020"	1100-040-182	
Standard	Standard		1100-040-170
+ 0.010"	Standard		1100-040-181

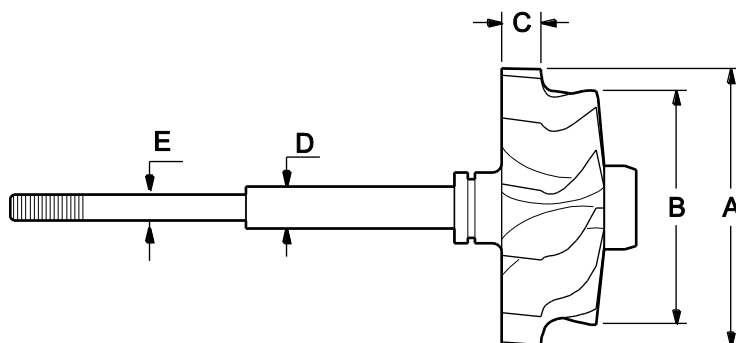
Piston Rings Performance

T3/T4		Turbine	Compressor	Comments
OD	Width			
Standard	Standard	1100-040-162		Stepped gap

T3 Type

Major Replacement Parts

Shaft & Wheels



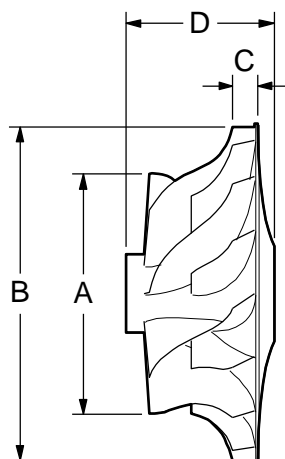
OE Number	Melett Part No.	Inducer Diameter A	Exducer Diameter B	Tip Height C	Journal Bearing D	Comp. Wheel Bore E	Blades	Type of Shaft
409392-0022	1100-030-436	65.5	49.3	10.3	10.2	6.3	11	Straight
409392-0029	1100-030-436	65.5	49.3	10.3	10.2	6.3	11	Straight
443861-0007	1100-030-436	65.5	49.3	10.3	10.2	6.3	11	Straight
446494-0001	1100-030-436	65.5	49.3	10.3	10.2	6.3	11	Straight
446694-0001	1100-030-436	65.5	49.3	10.3	10.2	6.3	11	Straight
451310-0003	1100-030-436	65.5	49.3	10.3	10.2	6.3	11	Straight
451311-0014	1100-030-435	58.9	48.7	11.5	10.2	6.3	11	Straight
451314-0002	1100-030-437	65.5	54.0	9.5	10.2	6.3	11	Straight

More Shaft and wheels are currently in development with many popular parts due into stock through 2010/11. Please contact Melett Sales for an up to date list of what's available

T3 Type

Major Replacement Parts

Compressor Wheels



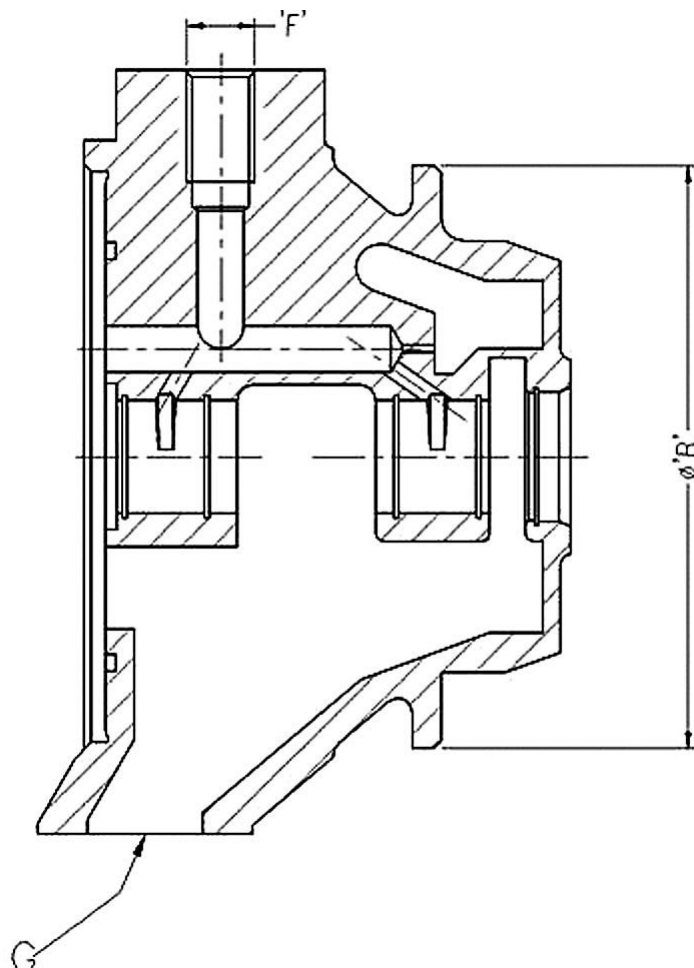
OE Number	Melett Part No.	Inducer Diameter A	Exducer Diameter B	Tip Height C	Total Height D	Blades	Flatback/ Superback /trim	Shaft Bore
409096-0004	1100-030-403	37.7	60.1	4.6	32	6\6	Superback	6.3
409096-0011	1100-030-403	37.7	60.1	4.6	32	6\6	Superback	6.3
409096-0001	1100-030-401	40.5	60.1	5.1	32	6\6	Superback	6.3
409096-0008	1100-030-401	40.5	60.1	5.1	32	6\6	Superback	6.3
409096-0005	1100-030-402	42.5	60.1	5.3	32	6\6	Superback	6.3
409096-0014	1100-030-402	42.5	60.1	5.3	32	6\6	Superback	6.3
409096-0009	1100-030-404	44.6	60.1	6.3	32	6\6	55	6.3
409096-0006	1100-030-400	46.5	60.1	6.3	32	6\6	Superback	6.3
409096-0013	1100-030-400	46.5	60.1	6.3	32	6\6	Superback	6.3
441341-0002	1100-030-410	48.8	68.9	5.6	32	6\6	46	6.4

*More Compressor Wheels are currently in development with many popular parts due into stock through 2010/11.
Please contact Melett Sales for an up to date list of what's available*

T3 Type

Major Replacement Parts

Bearing Housings



'H' dimension is the Water Connection thread size.

OE Number	Melett Part No.	B Dia (mm)	C Dia (mm)	D Dia (mm)	E Dia (mm)	F Oil Inlet	G Oil Outlet	H Water
430027-0022	1100-030-450	81.00	N/a	N/a	N/a	Universal	2 - M8 x 1.25	N/a
430027-0025	1100-030-450	81.00	N/a	N/a	N/a	Universal	2 - M8 x 1.25	N/a
430027-0029	1100-030-450	81.00	N/a	N/a	N/a	Universal	2 - M8 x 1.25	N/a
430027-0036	1100-030-461	81.00	N/a	N/a	N/a	Universal	2 - M8 x 1.25	M16 x 1.5
430027-0039	1100-030-460	81.00	N/a	N/a	N/a	Universal	2 - M8 x 1.25	M18 x 1.5

T3 Type

Major Replacement Parts

Turbine Housings

Manufactured from high quality material with excellent crack resistant properties

Vehicle Make	Vehicle Model	Year	Fuel	Model	To fit turbo...	OE Hsg No.	A/R	Melett Part No.
Alfa Romeo	155 2.0L	92 to 96	P	TB0367	465103-1	432224-1	0.48	1100-030-835
Alfa Romeo	164 2.0L	87 --->	P	TB0338	466384-7	430394-12	0.48	1100-030-820
Alfa Romeo	75 IE 1.8L	86 to 88	P	TB0353	466858-1	432223-11	0.48	1100-030-833
Fiat / Lancia	Croma	91	P	TB0338	466384-9	430394-12	0.48	1100-030-820
Fiat / Lancia	Croma IE	85	P	TB0338	466384-3	430394-12	0.48	1100-030-820
Fiat / Lancia	Croma IE	88	P	TB0338	466384-8	430394-12	0.48	1100-030-820
Fiat / Lancia	Croma/Théma IE	86	P	TB0338	466384-4	430394-12	0.48	1100-030-820
Fiat / Lancia	Delta 4WD	86	P	TB0338	466384-2	430394-12	0.48	1100-030-820
Fiat / Lancia	Théma	84 to 86	P	TB0338	466384-1	430394-12	0.48	1100-030-820
Ford	Escort III RS 1.6L	84 to 86	P	TB0345	466644-1	430394-11	0.36	1100-030-830
Ford	Escort IV RS 1.6L	86 to 91	P	TB0355	466644-1	430394-11	0.36	1100-030-830
Ford	Sierra RS Cos. 4x4	90 to 93	P	TB0384	465189-2/3	413746-1/3	0.48	1100-030-829
Ford	Sierra RS Cosworth	87 to 89	P	TB0361	466962-1	444027-1	0.48	1100-030-828
Nissan	Patrol GR 3.3L		D	HT15B	Garrett Replacement CHRA			1100-030-823
Renault	R21 Turbo 1.9L	86 to 92	P	TB0370	466948-1	444385-1	0.48	1100-030-834
Saab	Saab 900	87 to 88	P	TB0357	466954-1/2	430394-12	0.48	1100-030-820
Saab	Saab 900	87	P	TB0358	466956-1	430394-12	0.48	1100-030-820
Saab	Saab 900	81 to 82	P	TB0312	465514-1 to 4	430394-12	0.48	1100-030-820
Saab	Saab 900	82 to 86	P	TB0321	465904-2/3	430394-12	0.48	1100-030-820
Saab	Saab 900	89 --->	P	TB0382	465163-1 to 4	430394-12	0.48	1100-030-820
Saab	Saab 900	83 to 87	P	TB0339	466420-1/2	430394-12	0.48	1100-030-820
Saab	Saab 9000	84 to 86	P	TB0343	466456-1/2	430394-12	0.48	1100-030-820
Saab	Saab 9000	86 to 89	P	TB0356	466952-1 to 5	430394-12	0.48	1100-030-820
Volvo	Volvo 700 2.3L	86 to 89	P	TB0363	466672-1 to 5	430641-1/2	0.48	1100-030-821
Volvo	Volvo 700 2.3L	83 to 85	P	TB0326	466032	430641-1/2	0.48	1100-030-821
Volvo	Volvo 700 2.3L	88 --->	P	TB0379	413582-1/2	465143-1/2/3	0.48	1100-030-821