



E: info@melett.com
W: www.melett.com



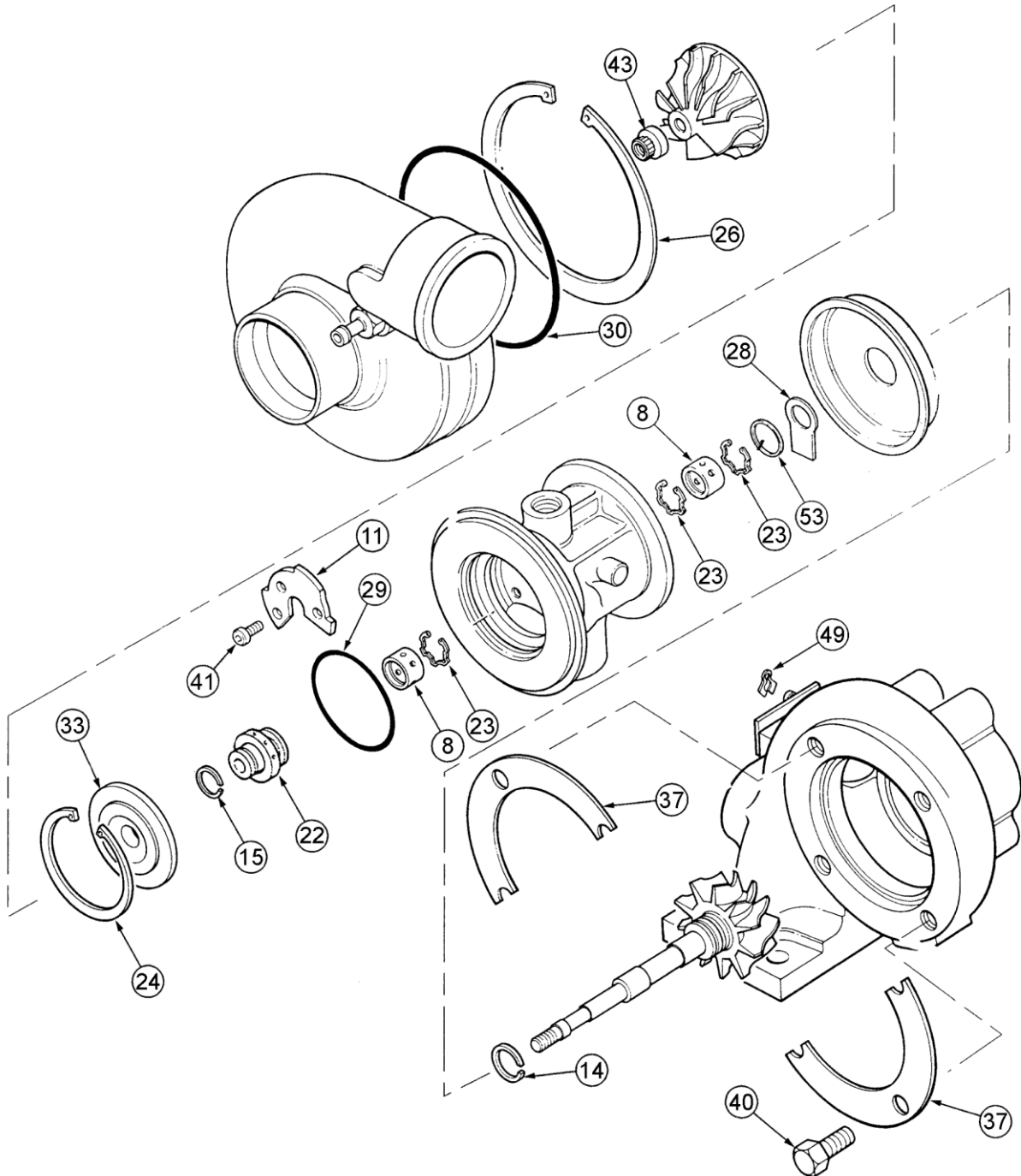
Garrett

T2/T25/T28

Type Turbos

T2/T25/T28 Type (Dynamic)

Common Service Parts



T2/T25/T28 Type (Dynamic)

Repair Kits and Service parts

All parts are available for purchase as individual components
or in the following popular Repair Kits

Key	Part Number	Description	Qty in Turbo	1100-020-750	1100-020-753	1100-020-758	1100-020-759	1100-020-760	1100-025-750	1100-025-758	1100-025-760	1100-025-761
8	1100-020-100	Bearing T2/T25 (Narrow 7.67mm)	2	2		2		2				2
8	1100-025-100	Bearing T2/T25 (Wide 9.37mm)	2						2	2	2	2
11	1100-025-320	Thrust Bearing	1	1	1	1	1	1	1	1	1	1
15	1100-025-160	Piston Ring Turbine	1	1	1	1	1	1	1	1	1	1
17	1100-025-170	Piston Ring Compressor.	1	1	1	1	1	1	1	1	1	1
22	1100-025-200	Thrust Collar Dynamic	1			1	1	1		1	1	1
23	1100-025-140	Retaining Ring T2/25 (Serpentine)	3	3	3	3	3	3	3	3	3	3
23	1100-025-141	Spiral Ring T2/T25	1				1	1			1	1
23	1102-020-140	Circlip (GT20 Bearing Retainer)	3	3	3	3	3	3	3	3	3	3
29	1100-025-150	O Ring Insert	1	1	1	1	1	1	1	1	1	1
30	1100-025-155	O Ring Comp Cover 73mm	1				1	1			1	1
30	1100-025-156	O Ring Comp Cover 82mm	1					1			1	1
33	1100-025-300	Insert Plate	1	1	1	1	1	1	1	1	1	1
41	1100-025-620	Screw Thrust Bearing (Patched)	3	3	3	3	3	3	3	3	3	3
40	1100-025-600	Bolt (Turbine Hsg)	4				4	4			4	4
43	1100-025-350	Shaft Nut LHT	1	1	1	1	1	1	1	1	1	1
49	1100-025-395	Actuator Clip T2	1	1	1	1	1	1	1	1	1	1
49	1100-030-395	Actuator Clip T3	1	1	1	1	1	1	1	1	1	1
53	1100-025-250	Shim (15x10x0.38)	1				1	1			1	1

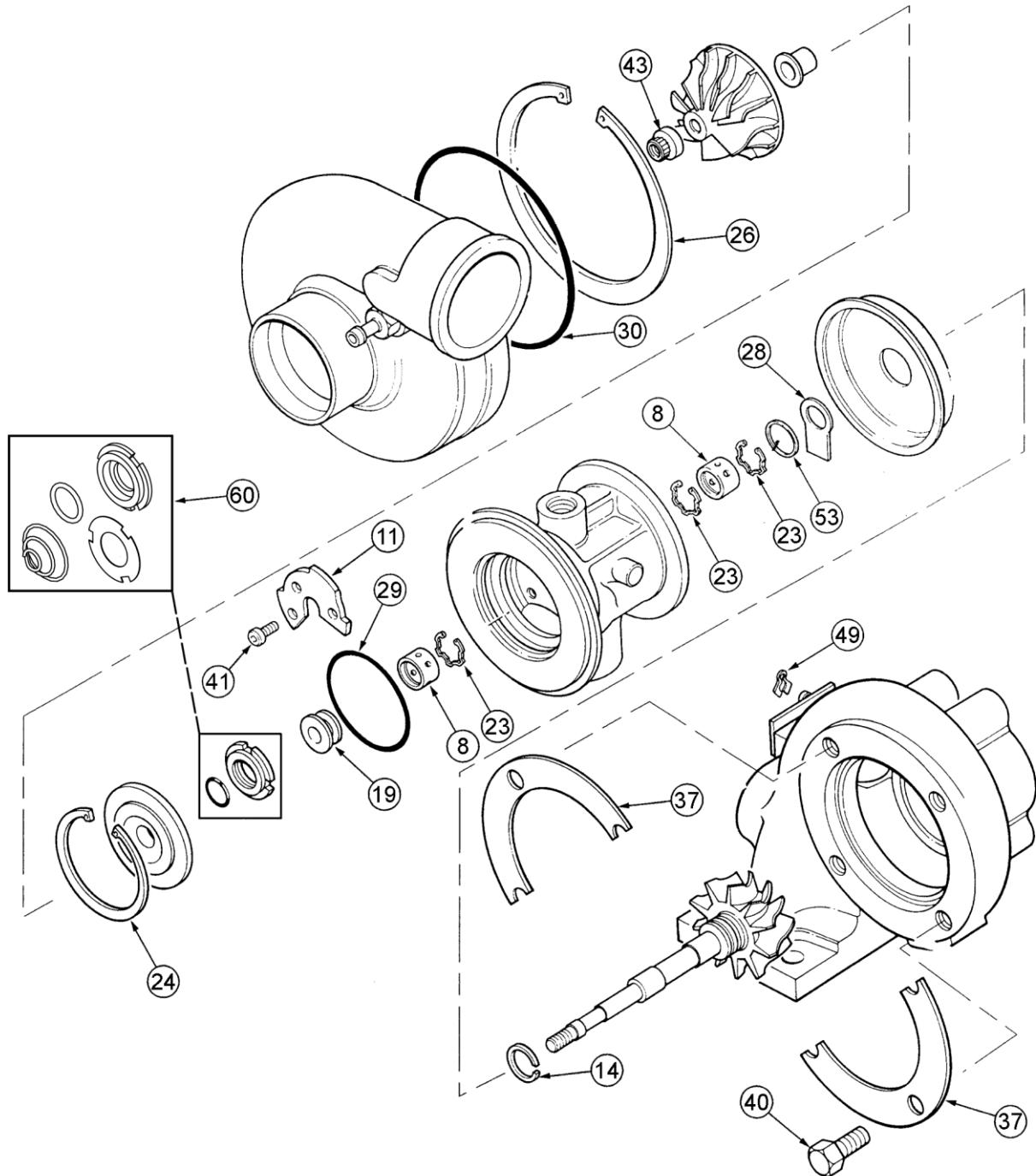
Description of Repair Kits available

- 1100-020-750** Repair Kit (Minor) T2/T25 Narrow Journal Bearings
- 1100-020-753** Repair Kit (Minor) T2/T25 No Journal Bearings
- 1100-020-758** Repair Kit (Minor) T2/T25 Narrow Journal Bearings including Thrust Collar
- 1100-020-759** Repair Kit (Minor) T2/T25 Including Thrust Collar but NO Journal Bearings
- 1100-020-760** Repair Kit (Major) T2/T25 Narrow Journal Bearings
- 1100-025-750** Repair Kit (Minor) T2/T25 Wide Journal Bearings
- 1100-025-758** Repair Kit (Minor) T2/T25 Wide Journal Bearings including Thrust Collar
- 1100-025-760** Repair Kit (Major) T2/T25 Wide Journal Bearings
- 1100-025-761** Repair Kit (Major) T2/T25 Universal including both Journal Bearings

For oversize Journal Bearings and piston rings, see page 10

T2/T25/T28 Type (Carbon Seal)

Common Service Parts



T2/T25/T28 Type (Carbon Seal)

Repair Kits and Service parts

All parts are available for purchase as individual components
or in the following popular Repair Kits

Key	Part Number	Description	Qty in Turbo	1100-020-754	1100-025-754	1100-025-763
8	1100-020-100	Bearing T2/T25 (Narrow 7.67mm)	2	2		2
8	1100-025-100	Bearing T2/T25 (Wide 9.37mm)	2		2	2
11	1100-025-320	Thrust Bearing	1	1	1	1
14	1100-025-160	Piston Ring Turbine	1	1	1	1
18	1100-025-162	Piston Ring (Step gap)	1			
23	1100-025-140	Retaining Ring T2/25 (Serpentine)	3	3	3	3
23	1100-025-141	Spiral Ring T2/T25	1			1
23	1102-020-140	Circlip (GT20 Bearing Retainer)	3	3	3	3
29	1100-025-150	O Ring Insert	1	1	1	1
30	1100-025-155	O Ring Comp Cover 73mm	1			
30	1100-025-156	O Ring Comp Cover 82mm	1			
40	1100-025-600	Bolt (Turbine Hsg)	4			
41	1100-025-620	Screw Thrust Bearing (Patched)	3	3	3	3
43	1100-025-350	Shaft Nut LHT	1	1	1	1
49	1100-025-395	Actuator Clip T2	1	1	1	1
49	1100-030-395	Actuator Clip T3	1	1	1	1
53	1100-025-250	Shim (15x10x0.38)	1			
60	1100-025-270	Carbon Seal Kit	1	1	1	1

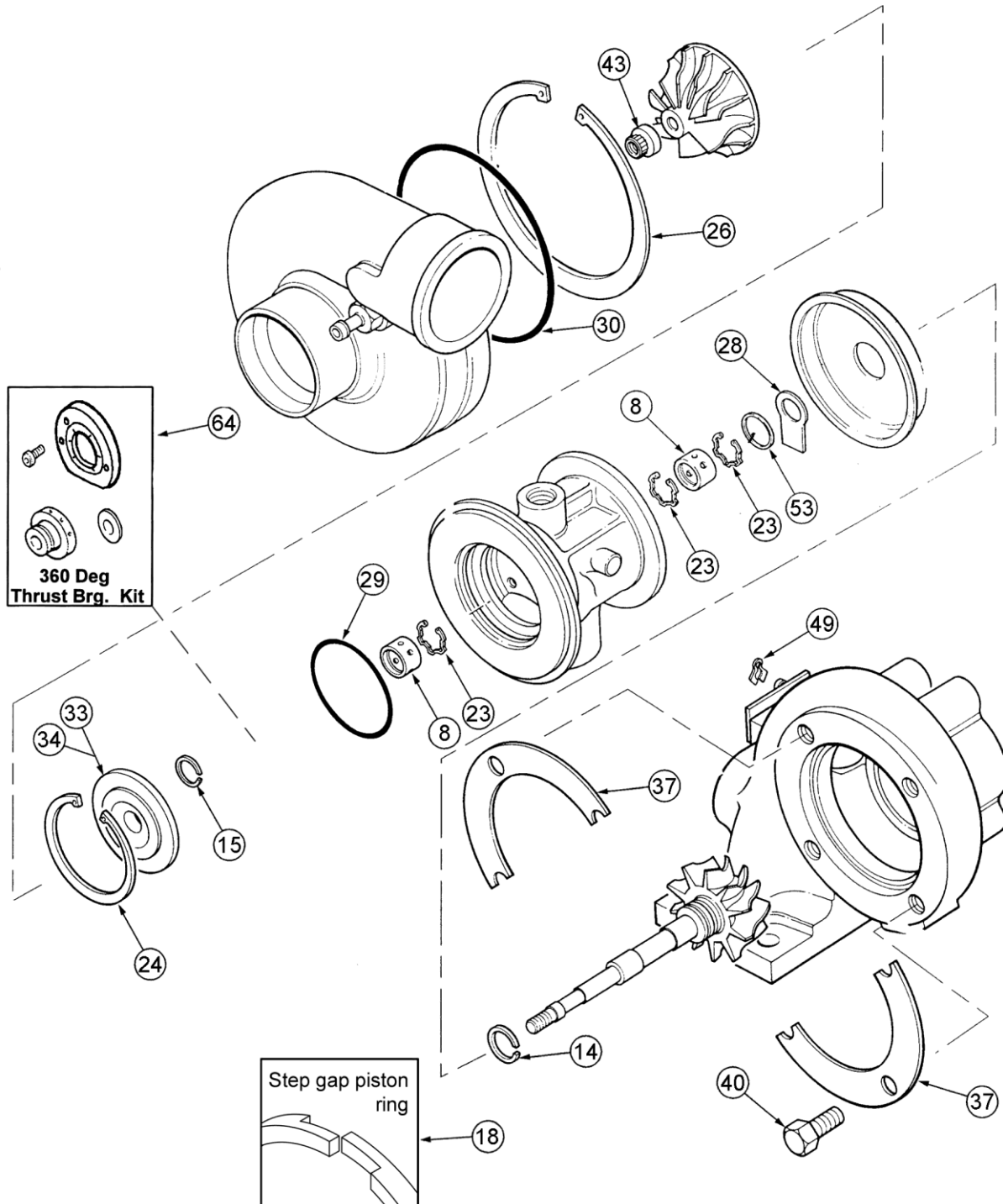
Description of Repair Kits available

- 1100-020-754** Repair Kit (Minor) T2/T25 Narrow Journal Bearing
- 1100-025-754** Repair Kit (Minor) T2/T25 Wide Journal Bearings
- 1100-025-763** Repair Kit (Major) T2/T25 Universal incl both Journal Bearings

For oversize Journal Bearings and piston rings, see page 10

T2/T25/T28 Type (Dynamic Seal)

Performance Parts & Upgrade Kits



T2/T25/T28 Type (Dynamic Seal)

Performance Parts & Upgrade Kits

As well as supplying the basic 360° kit, Melett also offers the following upgrade kits which offer excellent value for money in comparison to buying the individual piece parts.

Key	Part Number	Description	Qty in Turbo	1100-020-757	1100-020-766	1100-025-757
8	1100-020-100	Bearing T2/T25 (Narrow 7.67mm)	2	2		
8	1100-025-100	Bearing T2/T25 (Wide 9.37mm)	2			2
17	1100-025-170	Piston Ring Compressor.	1	1	1	1
18	1100-025-162	Piston Ring (Step gap)	1	1		1
23	1100-025-140	Retaining Ring T2/25 (Serpentine)	3	3	3	3
23	1100-025-141	Spiral Ring T2/T25	1			
23	1102-020-140	Circlip (GT20 Bearing Retainer)	3	3	3	3
29	1100-025-150	O Ring Insert	1	1	1	1
30	1100-025-155	O Ring Comp Cover 73mm	1			
30	1100-025-156	O Ring Comp Cover 82mm	1			
33	1100-025-300	Insert Plate	1	1	1	1
40	1100-025-600	Bolt (Turbine Hsg)	4			
43	1100-025-350	Shaft Nut LHT	1	1	1	1
49	1100-025-395	Actuator Clip T2	1		1	
49	1100-030-395	Actuator Clip T3	1		1	
64	1100-025-751 See Notes Below	Screw Thrust Bearing (Patched)	3	3	3	3
		Thrust Bearing 360°	1	1	1	1
		Thrust Collar 360°	1	1	1	1
		Thrust Washer 360°	1	1	1	1

Notes

1. The 360° thrust kit is only sold as the 4 part kit (thrust bearing, collar, spacer and screws). All parts must be used together to give optimal performance.
2. 360°kit replaces standard thrust bearing and collar
3. 360° thrust bearing can be secured by drilling and tapping into the bearing housing. Care should be taken when drilling into the water cooled bearing housing to ensure water cavity is not broken into.

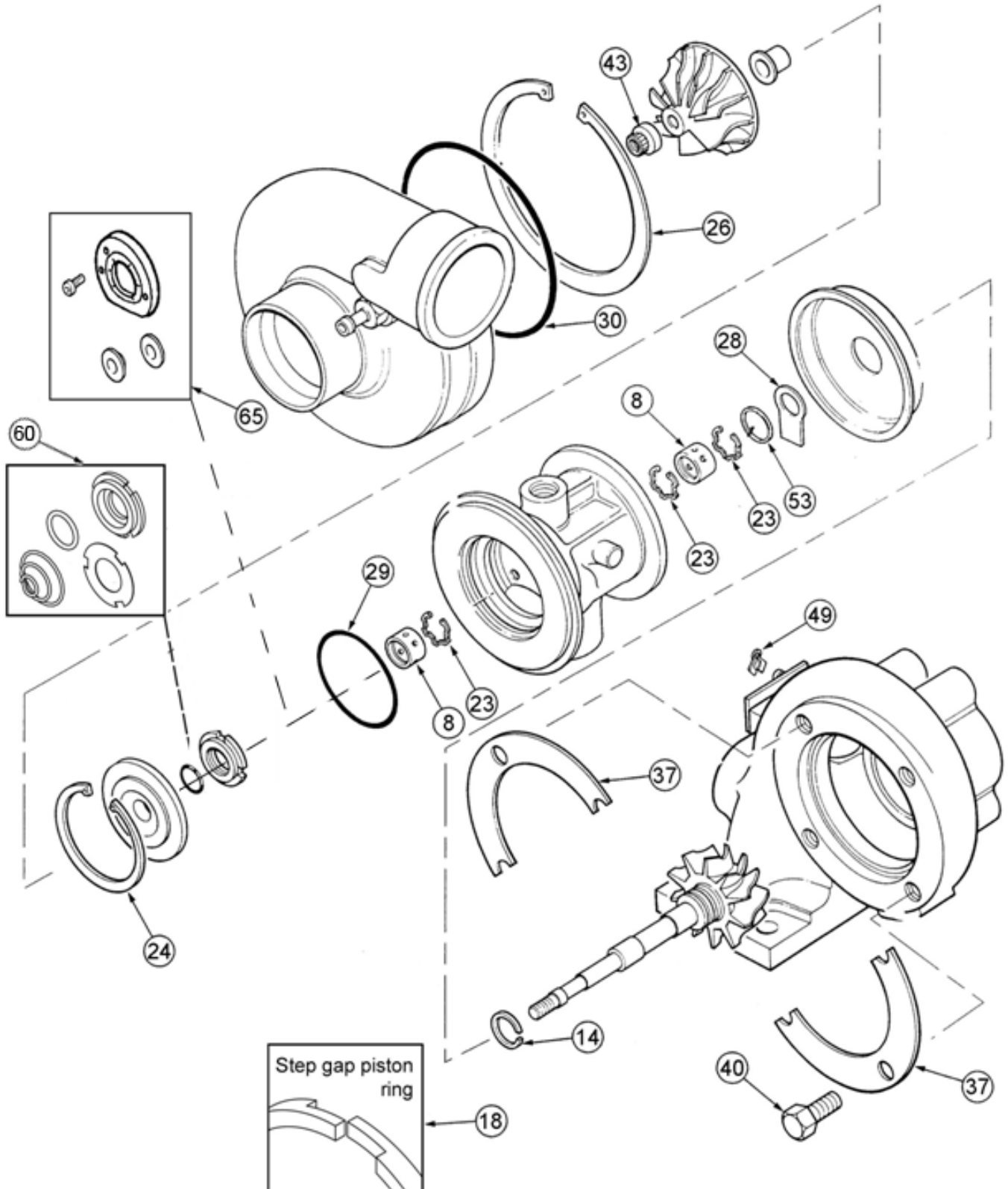
Description of Repair Kits available

- 1100-020-757 Upgrade Kit T2/T25 Including Narrow Journal Bearings
- 1100-020-766 Upgrade Kit (Minor) T2/25 No Journal Bearings
- 1100-025-751 Upgrade Thrust Kit T2/25 (360°)
- 1100-025-757 Upgrade Kit T2/T25 Including Wide Journal Bearings

For oversize Journal Bearings and piston rings, see page 10

T2/T25/T28 Type (Carbon Seal)

Performance Parts & Upgrade Kits



T2/T25/T28 Type (Carbon Seal)

Performance Parts & Upgrade Kits

As well as supplying the basic 360° kit, Melett also offers the following upgrade kits which offer excellent value for money in comparison to buying the individual piece parts.

Key	Part Number	Description	qty in Turbo	1100-020-756	1100-025-756
8	1100-020-100	Bearing T2/T25 (Narrow 7.67mm)	2	2	
8	1100-025-100	Bearing T2/T25 (Wide 9.37mm)	2		2
18	1100-025-162	Piston Ring (Step gap)	1	1	1
23	1100-025-140	Retaining Ring T2/25 (Serpentine)	3	3	3
23	1100-025-141	Spiral Ring T2/T25	1		
23	1102-020-140	Circlip (GT20 Bearing Retainer)	3	3	3
29	1100-025-150	O Ring Insert	1	1	1
30	1100-025-155	O Ring Comp Cover 73mm	1		
30	1100-025-156	O Ring Comp Cover 82mm	1		
40	1100-025-600	Bolt (Turbine Hsg)	4		
43	1100-025-350	Shaft Nut LHT	1	1	1
49	1100-025-395	Actuator Clip T2	1		
49	1100-030-395	Actuator Clip T3	1		1
53	1100-025-250	Shim (15x10x0.38)	1		
60	1100-025-270	Carbon Seal Kit	1	1	1
65	1100-025-752 See Notes Below	Screw Thrust Bearing (Patched)	3	3	3
		Thrust Bearing 360°	1	1	1
		Thrust Collar 360°	1	1	1

Notes

4. The 360° carbon seal thrust kit is only sold as the 3 part kit (thrust bearing, collar, and screws). All parts must be used together to give optimal performance.

5. 360° kit replaces standard thrust bearing and collar

6. 360° thrust bearing can be secured by drilling and tapping into the bearing housing. Care should be taken when drilling into the water cooled bearing housing to ensure water cavity is not broken into.

Description of Repair Kits available

1100-020-756	Upgrade Kit T2/T25 Incl Narrow Journal Bearings
1100-025-752	Upgrade Thrust Kit Carbon
1100-025-756	Upgrade Kit (Minor) T2/25 Incl Wide Journal Bearings

For oversize Journal Bearings and piston rings, see page 10

T2/T25/T28 Type

Oversize and Performance Repair Parts

Journal Bearings

T2/25/28		Narrow	Wide
Standard	Standard	1100-020-100	1100-025-100
+ 0.005"	- 0.005"	1100-020-110	1100-025-110
+ 0.005"	Standard	1100-020-114	1100-025-114
Standard	- 0.005"	1100-020-117	1100-025-117
+ 0.010"	- 0.010"	1100-020-120	1100-025-120
+ 0.010"	Standard	1100-020-124	1100-025-124
Standard	- 0.010"	1100-020-127	1100-025-127
+ 0.010"	- 0.005"	1100-020-131	1100-025-131
+ 0.015"	Standard	1100-020-135	N/A

Piston Rings

T2/25/28		Turbine	Compressor	Comments
OD	Width			
Standard	Standard	1100-025-160		
+ 0.010"	Standard	1100-025-180		
Standard	+ 0.010"	1100-025-181		
+ 0.010"	+ 0.010"	1100-025-182		
Standard	+ 0.020"	1100-025-183		
+ 0.010"	+ 0.020"	1100-025-184		
Standard	Standard		1100-025-170	

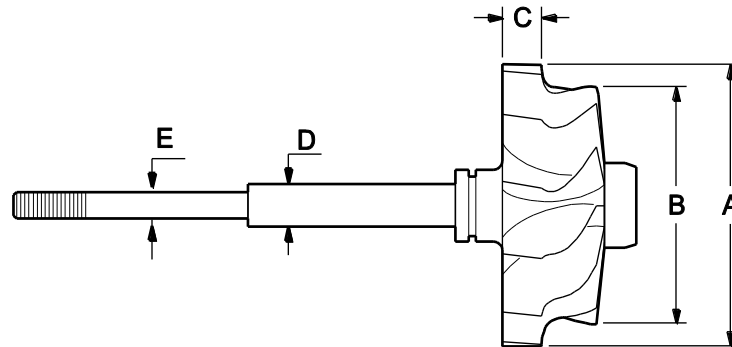
Piston Rings Performance

T2/25/28		Turbine	Compressor	Comments
OD	Width			
Standard	Standard	1100-025-162		Stepped gap
Standard	+ 0.010"	1100-025-163		Stepped gap

T2/T25/T28 Type

Major Replacement Parts

Shaft & Wheels



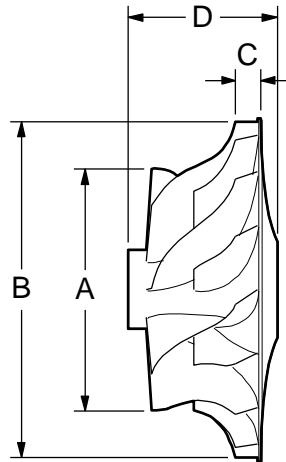
OE Number	Melett Part No.	Inducer Diameter A	Exducer Diameter B	Tip Height C	Journal Bearing D	Comp. Wheel Bore E	Blades	Type of Shaft
435737-0006	1100-020-435	47.0	35.6	7.3	9.2	6.0	11	Straight
435922-0001	1100-025-436	52.8	41.9	6.3	9.2	6.0	11	Straight

*More Shaft and wheels are currently in development with many popular parts due into stock through 2010/11.
Please contact Melett Sales for an up to date list of what is available*

T2/T25/T28 Type

Major Replacement Parts

Compressor Wheels



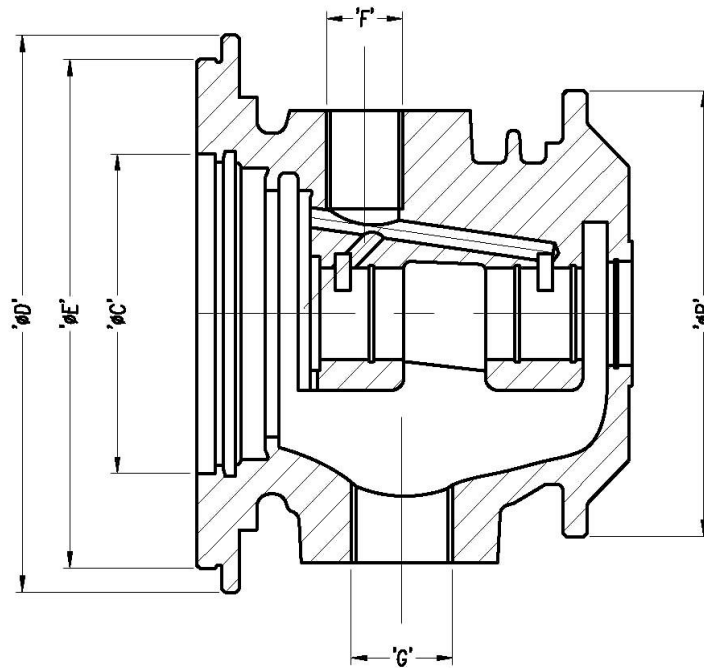
OE Number	Melett Part No.	Inducer Diameter A	Exducer Diameter B	Tip Height C	Total Height D	Blades	Flatback/ Superback /trim	Shaft Bore
410450-0013	1100-025-401	35.7	48.0	5.3	24.4	6\6	Superback	6.0
446335-0009	1100-025-400	38.3	54.0	5.8	24.5	5\5	50	6.0
445436-0011	1100-028-400	42.5	60.1	5.3	24.5	6\6	Superback	6.0

*More Compressor Wheels are currently in development with many popular parts due into stock through 2010/11.
Please contact Melett Sales for an up to date list of what is available*

T2/T25/T28 Type

Major Replacement Parts

Bearing Housings



'H' dimension is the Water Connection thread size.

OE Number	Melett Part No.	B Dia (mm)	C Dia (mm)	D Dia (mm)	E Dia (mm)	F Oil Inlet	G Oil Outlet	H Water
435350-0003	1100-020-450	68.00	48.75	84.90	77.65	M12 X 1.5	M16 x 1.5	N/a
435350-0014	1100-020-451	68.00	48.75	95.10	87.10	M12 X 1.5	2 - M8 x 1.25	N/a
435350-0002	1100-020-453	68.00	52.10	84.90	77.65	M12 X 1.5	7/8 UNS	N/a
444357-0014	1100-025-460	68.00	52.10	95.10	87.10	M12 X 1.5	2 - M8 x 1.25	M14 x 1.5
435350-0006	1100-020-452	68.00	55.10	95.10	87.10	M12 X 1.5	2 - M8 x 1.25	N/a

Heatshield/ Disk Shroud

OE Number	Melett Number	Description
445118-0001	1100-025-340	T25 Aircooled

T2/T25/T28 Type

Major Replacement Parts

Turbine Housings

Manufactured from high quality material with excellent crack resistant properties

Vehicle Make	Vehicle Model	Year	Fuel	Model	To fit turbo...	OE Hsg No.	A/R	Melett Part No.
Chrysler	Cherokee TD	84 --->	D	TB0216	466452-1	430609-59	0.47	1100-020-824
Citroen	Evasion 1.9L	95 to 00	D	TB0280	454086-1	430609-174	0.41	1100-020-828
Citroen	Xantia 1.9L		D	TB0265	454131-2/3	430609-176	0.41	1100-020-828
Citroen	ZX 1.9L	92 to 96	D	TB0265	454027-1/2	430609-175	0.41	1100-020-828
Citroen	XM 2.0L	93 to 95	P	TB2567	465439-2	435493-2	0.64	1100-025-821
Citroen	XM 2.0L	95 to 00	P	TB2572	454162-1	435493-2	0.64	1100-025-821
Fiat / Lancia	Delta HF	86	P	TB0225	466728-1/2	430609-98	0.63	1100-020-823
Ford	Fiesta	89 to 91	P	TB0250	465187-1/2	413800-1	0.47	1100-020-821
Land Rover	Land Rover 2.5L	---> 86	D	TB0226	466842-2	430609-0155	0.47	1100-020-820
Nissan	Cherry		P	TB0208	466250-1/2	430609-40	0.47	1100-020-820
Nissan	ZX	84	P	TB0208	466250-1/2	430609-40	0.47	1100-020-820
Nissan	Bluebird/Sylvia	84 --->	P	TB0210	466370-2 to 29	430609-56	0.63	1100-020-823
Nissan	200 SX		P	TB2525	465795-1/2/4	430609-113	0.64	1100-020-825
Nissan	Patrol GR 2.8L	90 --->	D	TB2533	452022-1	430609-132	0.48	1100-025-820
Nissan	Patrol GR 2.8L	90 --->	D	TB2527	465941-1/2/4	430609-99	0.48	1100-025-820
Peugeot	306 1.9L	93 -->	D	TB0280	454086-1	430609-174	0.41	1100-020-828
Peugeot	406 1.9L	93 to 96	D	TB0264	465575-1/2	430609-174	0.41	1100-020-828
Peugeot	406 1.9L	96 to 98	D	TB0289	454131-2/3	430609-174	0.41	1100-020-828
Peugeot	605 1.9L	95 --->	D	TB0280	454085-1	430609-174	0.41	1100-020-828
Peugeot	605 2.0L	93 to 99	P	TB2587	465439-2	435493-2	0.64	1100-025-821
Renault	R9 & 11 Turbo 1.4L	86 --->	P	TB0203	466196-3	430609-63/30	0.35	1100-020-822
Renault	Super 5 GT Turbo	87 --->	P	TB0235	465367-1/2	430609-63/94	0.35	1100-020-822
Renault	Super 5 GT Turbo		P	TB0214	466506-3/5/7	430609-94	0.35	1100-020-822
Renault	Espace 2.1L	85 --->	D	TB0213	466450-1	430609-59	0.47	1100-020-824
Renault	Espace 2.1L	93 --->	D	TB0270	454067-1	430609-59	0.47	1100-020-824
Renault	R21 TD 2.1L	86 to 92	D	TB0213	466450-1	430609-59	0.47	1100-020-824
Renault	R25 TD 2.1L	86 --->	D	TB0213	466450-1	430609-59	0.47	1100-020-824
Renault	R9 & 11 Turbo 1.4L	83 to 87	P	TB0203	466196-1	430609-30	0.35	1100-020-891
Renault	Super 5 GT Turbo	86 --->	P	TB0203	466506-1/2	430609-30	0.35	1100-020-891
Rover	Montego	---> 88	D	TB0223	466770-3	430609-55	0.35	1100-020-891
Rover	Montego	89 to 92	D	TB0223	466770-5	430609-55	0.35	1100-020-891
Rover	820/220/420	92 --->	P	TB2555	465199-3	434129-5	0.49	1100-025-822