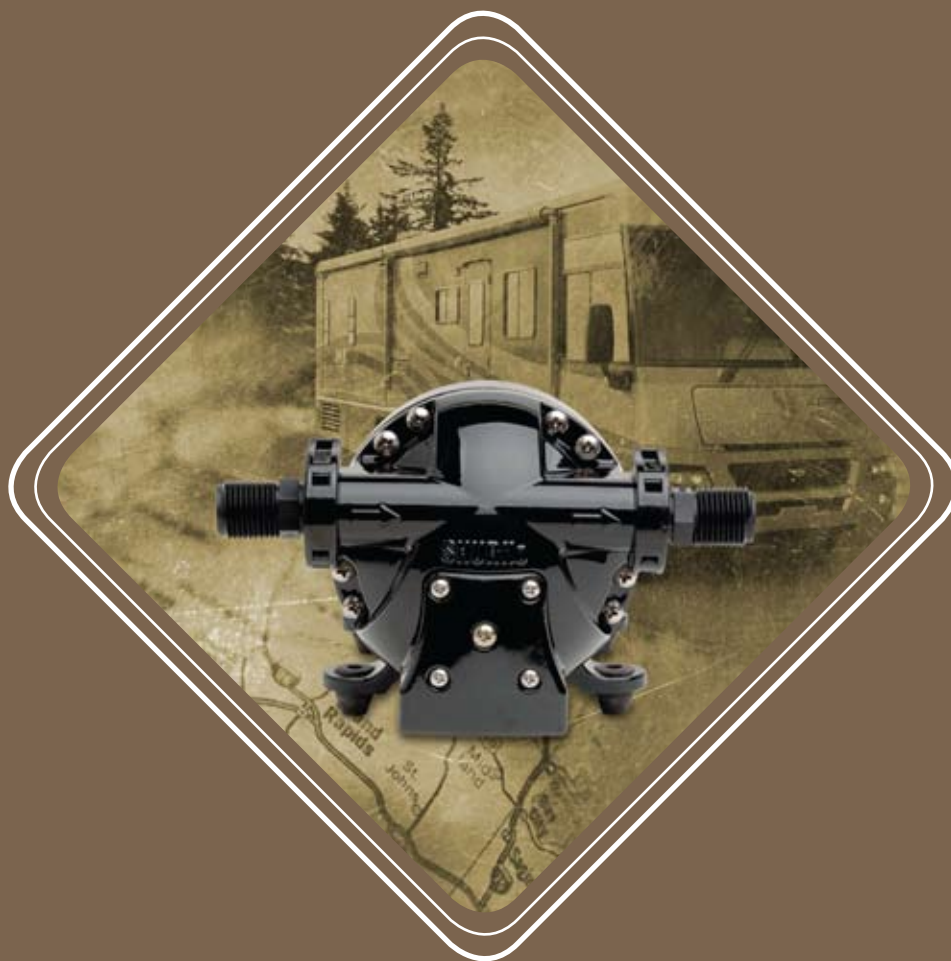




SHURflo®

Pentair Water



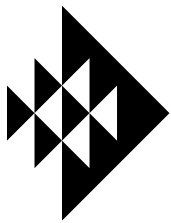
Recreational Vehicle Product Catalog

In 1968, SHURflo's primary scope of business focused on the manufacturing of quality water pumping systems to meet the needs of the recreational vehicle industry. SHURflo has since diversified its product line to include pumps and system components for the Marine, Food Service and Industrial markets. Headquartered in Cypress, California, SHURflo continues to provide every customer with quality solutions for their water delivery, air circulation, filtration and plumbing fulfillment needs. With a dedicated sales and service team, as well as distribution centers in Elkhart, Indiana and Crawley, England, SHURflo successfully satisfies the requirements of customer partners throughout the world. To accomplish this, SHURflo is committed to their vision of

Innovation, Quality and Service. IQS

is the framework which defines SHURflo's past, present and future.

It is the compass that sets the course to our continued success.



SHURflo®
Pentair Water

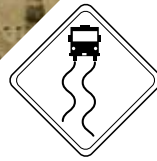


Recreational Vehicle Product Catalog

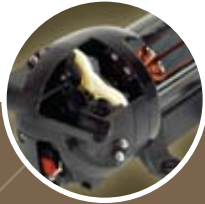
Contents

2-3	4	5	6-7	8-9	10-11	12-13	14-15	16	17-20
Extreme™ Series	Classic™ Series	General Purpose Pumps	Water System Accessories	Waterguard™ Filtration (Retail)	Everpure® Filtration	Comfort Air™ Circulation	Installation & Maintenance	Repair & Rebuild Kits	Product Specifications

Extreme™ Series



The Extreme™ Series line of pumps represent the ultimate in pump performance and reliability. Designed with a circuit board and microprocessor, these pumps use cutting edge technology to maximize flow and pressure while quietly delivering "Just Like Home" flow.



Smart Sensor™ 5.7

The Smart Sensor™ 5.7 is specifically designed to provide larger RV's with "Just Like Home" flow and pressure to drastically improve the performance of Showers, Toilets, Sinks, Washing Machines, Dish Washers and Whole-House Filtration units.



5900-0211

5.7 Gallons per Minute

65 PSI

Variable Speed

Quiet Operation

Multi-Fixture Use

Extra Large Inlet & Outlet Passages

5 Chambered Design

3-Year Warranty

Extreme™ Series Strainer (sold separately)

Keep your Extreme™ Series 5.7 pump flowing smooth and strong with the Extreme™ Series Strainer. The Extreme™ Series Strainer protects your pump by straining debris particles that can be trapped in the water storage tank. These strainers are engineered to compliment the higher flow rating of the Extreme™ Series Pumps. They are easy to install and even easier to clean.

Warning: The use of a standard strainer with the Smart Sensor™ 5.7 can reduce pump performance



254-266

Quietly delivering "Just Like Home" flow...



255-323

Classic™ Series Strainer (sold separately)

Designed to connect directly to the inlet of your Smart Sensor™ 4.0 or Classic™ Series Pump, the transparent design of these strainers allows users to easily check, while the new convenient bowl allows for fast cleaning. Available in barb, thread and swivel fittings.

Smart Sensor™ 4.0

The Smart Sensor™ 4.0 is specifically designed to provide mid-size RV's with "Just Like Home" flow and pressure, while significantly improving the performance of Showers, Toilets, Sinks and Whole-House Filtration units.

- 4.0 Gallons per Minute
- 50 PSI
- Variable Speed
- Quiet Operation
- Dual-Fixture Use
- Extra Large Inlet & Outlet Passages
- 4 Chambered Design
- 3-Year Warranty



4900-0211



Extreme™ 5.7 Series Fittings (sold separately)

The Smart Sensor™ 5.7 Pump comes standard with 1/2" Straight MPT quick connect fittings. Additional quick connect fittings are available in various sizes and configurations for custom installations.

Please see page 17 for specifications and other important details for the Smart Sensor™ 5.7 & 4.0.

Classic™ Series

In 1988, the Classic™ Series line of pumps by SHURflo emerged to set the standard for all potable water pumps throughout the RV Industry. Used worldwide, the Classic™ Series pumps quickly earned the reputation of being the most reliable pumps on the market.

All Classic™ Series pumps employ three independent pumping chambers capable of lifting water up to 12 feet. This feature allows these pumps to self-prime. Thermally protected, these pumps can run dry without damage. The Classic™ Series pumps also include a built-in check valve rated up to 200 PSI to help minimize cycling and eliminate back flow into the tank.

All Classic™ Series pumps incorporate ½" NPSM-Ports and can run dry without damage.

Whisper King™

The Whisper King™ was introduced to complement SHURflo's current "Classic" series line of potable water pumps. State-of-the-art materials are used in the insulation pad and feet to maximize sound absorption and a specially designed baseplate cradles the motor for superior noise control. The Whisper King™ pump comes standard with a strainer to help remove debris and extend pump life. At 2.0 gallons per minute, the Whisper King™ is the perfect pump for quiet operation.



2093-204-413



2088-422-444

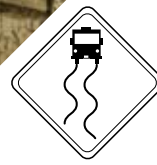
2088 Pumps

These legendary pumps have set the standard for the RV industry. SHURflo's 2088 pumps are equipped to deliver high performance and reliability every time they are used. SHURflo's potable water pumps operate three independent pumping chambers which allow these pumps to self-prime and lift water up to 12 feet. With smooth flow and uninterrupted operation, all Classic™ Series pumps include a built-in check valve rated to 200 PSI to prevent back flow into the tank. Each pump features an adjustable switch and has the capability to run dry without damage to the pump or motor.

Please see page 15 for specifications and other important details for Classic Series™ Pumps.

The Classic Series line of pumps emerged to set the standard for all potable water pumps...

General Purpose



Incorporating SHURflo's advanced motor technology, which includes thermal overload protection, these pumps are easy to install and are extremely versatile. Perfect for a variety of uses including winterizing, single-fixture operation and liquid transfer.

The Nautilus™ 100 Series



100-009-21

This tough, rugged and compact pump is specifically designed to deliver 1.0 GPM with minimal power consumption. The Nautilus™ is perfect for low volume, low pressure applications. Protected from a thermal overload, the Nautilus™ requires an in-line switch and a 3-amp fuse to operate.

Macerator Pump

SHURflo's macerator is designed to accommodate the need for a reliable, high performance waste evacuation pump. This pump incorporates a high quality motor with a new seamless shell design that is thermally protected. The unique features of the macerator include a premium impeller design with run dry capability, a dual blade and housing construction for problem free operation.



3200-200

105 Series

This compact automatic demand pump offers durability and dependability making it ideal for low volume, intermittent duty applications. The 105 pump self primes up to 2.5 vertical feet while delivering over 1.0 GPM. A 12 volt low power consumption motor, equipped with a thermal protector and long life pressure switch rated to 30 PSI, provides high pump performance and reliability.



105-003

Oil Change/Winterizing System

Save time and eliminate mess with SHURflo's complete Liquid Transfer System. Specifically developed as a complete system to make oil changing, winterizing and liquid transfer applications easy! This self-contained system accommodates a self-priming, 12-volt SHURflo pump with 8 feet of cable and battery clips for easy connection to a power source. A 3.5-gallon storage container is also included.



8050-305-426

*These pumps are easy to install
and extremely versatile...*

Please see page 17 for specifications and other important details for General Purpose Pumps.

Water System Accessories



Engineered to compliment SHURflo's legendary potable water pumps, these water system accessories are built to last. With a variety of innovative strainers that help to protect your pump, accumulators tanks that help reduce unwanted cycling and silencing kits that reduce plumbing noise, you will find that these products help to improve your passionate RVing lifestyle.

Pre-Pressurized Accumulator Tanks

SHURflo's accumulator tanks are a perfect complement to the Classic™ Series Pumps. Specifically designed to be installed downstream of your pump, these tanks help reduce unwanted cycling, pulsation and pressure spikes, while helping to prolong pump life and save battery power. SHURflo accumulator tanks use a patented domed displacement diaphragm to minimize noise and power usage. These accumulators are available in both a 24oz. nylon tank as well as a 2-gallon stainless steel tank, helping to accommodate any space constraints in your RV.



3400-002



182-200



255-323

255-313

255-325

Classic™ Series Strainers

Designed to connect directly to the inlet of your Classic™ Series Pump, the transparent design of these strainers allows for easy visual check, while the new convenient bowl allows for fast cleaning. Available in both barb or thread.

Pump Silencing Kit

Most RV manufacturers connect hard PEX tubing directly to the inlet and outlet of the water pump. Although this is convenient, it can create unwanted rattling and plumbing vibration noises. Installing SHURflo's Silencing Kit to the inlet and outlet of any pump helps to reduce unwanted pump and plumbing noise.



94-591-01

These tanks help reduce unwanted cycling, pulsation and pressure spikes...

*All of our faucets are smooth
and easy flowing with
exceptional durability...*



183-029-11



183-029-14



183-029-18

Pressure Reducing City Water Entries

SHURflo's exclusive diaphragm design prevents high-pressure damage often caused by city water systems. These high performance water entries limit water pressure safely to 65 PSI and they include a check valve.



183-039-01

Faucets & Pump/ Faucet Combos

All SHURflo faucets are smooth and easy flowing with exceptional durability.

Designed for ease-of-use with a water pump or city water system, they are the perfect solution to complement any RV.



340-001



94-009-20



94-009-10



15-045-02

SHURflo offers many fittings for use with the Classic™ Series Pumps. Models include straight, elbow and adapters. We have fittings to accommodate most applications

Fittings for Tubing & Hose



Please see pages 17 -18 for specifications and other important details for Water System Accessories.

Waterguard™ Filtration

All Filtration is NOT created Equal

With so many choices in water filtration, how do you really know which filter is best for you? Do you really know the quality of the filtration media that hides behind the walls of your filter? The first thing you need to know is that not all filtration is created equal. In fact, some filtration companies' go as far as using recycled filtration media from overseas to cut costs, even though it lacks the quality and reliability that you truly need from a water filter.



RV-10KDF-A
A look inside a Waterguard™ filter

Waterguard™ Filtration

When you want a filter you can trust, SHURflo has the solution for you. SHURflo starts by using only the highest quality filtration media in all of our Waterguard™ In-Line filters. Our two-stage water filters significantly reduce bacteria, chlorine, hydrogen sulfide, water-soluble heavy metals and microorganisms, providing you crisp, clean and safe drinking water.

Stage 1

The first stage of a Waterguard™ filter uses KDF 55 Process Medium. KDF 55 is a high purity copper-zinc alloy, which removes 98% of inorganic water-soluble heavy metals that are a concern to many public health officials and consumers alike. In addition, KDF 55 controls microorganisms and reduces lime scale, bacteria, chlorine and heavy metal content while improving water taste.



Stage 2

In the second stage of the Waterguard™ filtration process, we use only super premium water washed Coconut Shell Carbon. This high-activity carbon is designed specifically for high efficiency water purification and is manufactured from coconut shells, which give it high microporosity and superior hardness. This premium carbon is especially effective for adsorbing trace organic compounds while reducing chlorine and improving the taste of your water.



Waterguard™ Filtration Kit with Monitoring Faucet

This do-it-yourself kit installs directly into any RV that is in need of a water filtration system. This Waterguard™ Kit helps to deliver crisp, clean and safe drinking water. SHURflo's Monitoring faucet incorporates a small LED light, which blinks green under normal conditions, and changes to red to help remind you when the filter should be replaced. The complete kit includes: Monitoring faucet with battery, a Super Premium Two-Stage 10" Waterguard™ KDF filter, eight-feet of 1/4" tubing, adapter connection fitting and a filter clip.



94-009-51

Waterguard™ Super Premium Replacement In-Line Filter – (Universal Installation)

Tired of searching for the right part number to replace your inline filter? Not anymore! This Super Premium Two-Stage Waterguard™ filter replaces all SHURflo 6" and 10" filters, as well as all competitive brands. SHURflo uses only the highest quality KDF media and Coconut Shell Carbon to significantly reduce bacteria, chlorine, hydrogen sulfide, water-soluble heavy metals and microorganisms, providing you crisp, clean and safe drinking water. This complete kit includes 3/8" FPT, 1/2" MPT, 1/2" Quick Connect and Colder fittings.



Waterguard™ Super Premium Two-Stage Garden Hose In-Line Filter

SHURflo uses only the highest quality KDF media and Water Washed Coconut Shell Carbon to significantly reduce bacteria, chlorine, hydrogen sulfide, water-soluble heavy metals and microorganisms, providing you crisp, clean and safe drinking water. Connects directly to any Garden Hose for City Water Filtration.



RV-210GH-KDF-A

Filter Housing Kit

This is the perfect housing kit for Garden Hose connection or Under Counter adaption. Includes a Waterguard™

Carbon Paper Cartridge, Housing Wrench, Mounting Hardware, Male/Female Garden Hose Fittings and a 12" Garden Hose.



RV-10-VIH-A

Filter Cartridges

Designed to fit all standard brand filter housings, SHURflo cartridges are NSF listed and made with only Premium filtration medias.

(1) Carbon Paper (RV-10C1-A)

Reduces chlorine, cloudy water and sediment for improved taste. Filters up to 1,000 gallons with a flow rate of 1.0 GPM. (Twin Pack)

(2) Premium – Water Washed Coconut Shell (GAC) (RV-10VOC-A)

Reduces harmful volatile contaminates, chlorine, cloudy water and sediment for improved taste. Filters up to 1,000 gallons with a flow rate of .75 GPM.

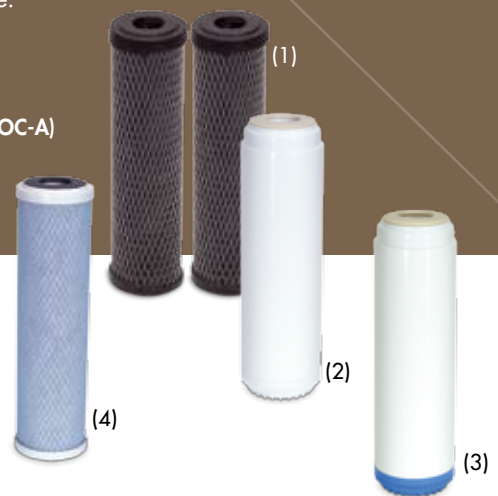
(3) Super Premium (RV-10KDF-A)

KDF 55/Water Washed Coconut Shell Carbon

Reduces harmful volatile organic contaminates, chlorine, cloudy water and sediment for improved taste. Filters up to 11,000 gallons with a flow rate of .75 GPM.

(4) Lead Sorbent Carbon Block (RV-10LC1-A)

Reduces Cysts by 99.9%, Lead by 96%, Giardia and Chlorine. Filters up to 1,000 gallons with a flow rate of .75 GPM.



Please see page 19 for specifications and other important details for Filtration.

Everpure® Filtration

EVERPURE®

WATER YOU CAN TRUST®



EV959206

ADC Quick Change Full-Timer Cartridge

Fits QL2/QL3 Everpure® Water Treatment Systems. Exclusive Micro-Pure® filter considerably reduces the taste and odor of chlorine, dirt, rust, cysts, and asbestos for about one season. Replacement is as easy as changing a light bulb. Requires no tools. Tested and certified by NSF.



EV959207

ADC Part-Timer Filter Cartridge

A short version of the standard Everpure® ADC replacement filter cartridge that fits QL2/QL3 Everpure® heads dating back to 1971! Perfect for part-time RVers or short trips. Unique space saving size so you'll always have a spare on hand. Reduces unpleasant tastes/odors including chlorine, sulfur, and iron, as well as dirt, rust, and sediment. Unlimited shelf life.



EV925205

Water Treatment System

The recommended superchlorination /dechlorination method disinfects your RV's entire water distribution system and can protect you from waterborne bacteria, viruses, mold and algae. The exclusive Micro-Pure® filter considerably reduces the taste and odor of chlorine, dirt, rust, cysts and asbestos. Certified by NSF International. Includes a QL3 head filter with disposable "Quick-Change" ADC Filter Cartridge, mounting bracket, liquid chlorine dispenser, chlorine test kit, anti-freeze diverter, all fittings (one each: 3/8" PVC threaded elbow, straight, and tube-to-tube connector fittings) and tubing for installation. Simplify winterizing procedures using the diverter in place of the cartridge. In springtime, flush your system with the diverter in place. Then, install a new water filter cartridge.

Great Tasting Healthy Clean Water!

Water Away From Home

Nothing spoils fun like the taste of contaminated water or discomfort of intestinal illness. When used as directed with the superchlorination process, this water treatment system provides a high level of protection for your family from viruses, bacteria and waterborne cysts such as Cryptosporidium and Giardia Lambia.

The Key To Better Water

This Everpure® water treatment system uses a process called superchlorination/dechlorination. Ordinary household bleach is added to the storage tank, which kills bacterial or viral contaminants. Then the water is fine-filtered to reduce the taste and odor of chlorine, as well as other off tastes and odors.

Water You Can Trust Everywhere You Travel

Everpure® is the leading water filtration system for restaurants, convenience store chains, vending machines, and other commercial establishments throughout the world. Why? They know Everpure® systems provide reliable, superior quality, easy installation and overall economy.

The Engineering of premium quality water.

The inner workings of an EVERPURE® ADC Full-timer cartridge reveal a unique technology.

- 1 Tap water enters the top of the Everpure® filter cartridge, flows down through the inlet tube and into the filter chamber.
- 2 Through our exclusive precoat process, Micro-Pure® coats the filter membrane throughout the life of the cartridge.
- 3 Incoming pressure forces the water through the layer of Micro-Pure and through the filter membrane. The openings
- in the Micro-Pure® layer are so small that any particle 1/2 micron (1/50,000 inch) or larger is removed, including cysts and asbestos fibers.
- 4 Once filtered water is drawn from the faucet, it channels up through the rigid grid structure of the filter membrane and out of the system, to be enjoyed as a refreshing drink or as a key ingredient of a fine meal.

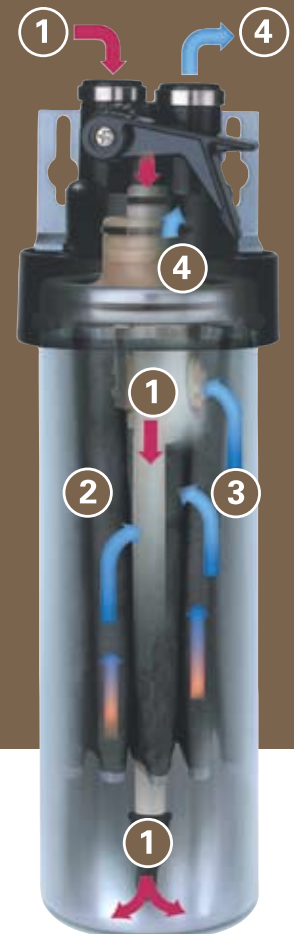


A proprietary blend of very fine activated carbon called Micro-Pure® coats a unique, pleated filter membrane. This provides more filtering surface than other systems of similar size.

Each filter membrane is comprised of two layers of nonwoven fabric—the Micro-Pure® adheres to the outer layer—supported by a netted channel structure. This ensures that water flows evenly and freely, even with changes in water pressure.

Quick-change ADC Full-timer cartridges contains a bacteriostat that prevents bacteria from growing on the filter media when it's not in use. The ADC Full-timer cartridge filters 750 gallons of water. *

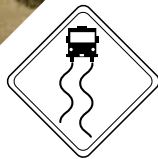
* Not performance Tested or Certified by NSF.



A heavy-duty aluminum cartridge housing protects the Everpure® filter system from splitting or bursting. It's lined with a food-grade polymer that prevents water from coming in contact with the aluminum.

Please see page 20 for specifications and other important details for Everpure™ Filtration.

Comfort Air™



SHURflo's Comfort Air™ Circulation Fans allow you and your family to enjoy refreshing, outside air in the comfort of your own coach. At SHURflo®, we take pride in engineering our products to specifically meet your needs and increase the level of your RV experience. With features such as the industry's first wireless remote control fan, variable speed control, an easy to remove screen, operation with the dome closed, and the ability to scatter air instead of blowing air, the Comfort Air™ fans have given you the ability to **Create Your Own Climate.**

FAN BLADE DESIGN

The Comfort Air™ fan blade is specifically designed to pull and evacuate air from throughout the entire RV. The advantage of this design is that it moves air from the entire living area, not from just below the fan. This results in faster air exchange in the coach, which cools it down quicker and removes odors faster.



DOME CLOSED OPERATION

Comfort Air™ can be used to circulate air in your RV even with the dome closed. By closing the dome and setting your fan to exhaust mode, the airflow bounces back into the living area creating a breeze similar to a ceiling fan. This feature allows you to circulate air during bad weather as well as keeping the warm air from your heater fresh.



RAIN SENSOR/THERMOSTAT

Control the operation of your Comfort Air™ with a thermostat setting that allows you to automatically turn the fan on and off between temperature ranges of 55°F and 105°F. Also equipped with a Rain Sensor that will automatically power off and close your fan in wet weather.



REMOTE CONTROL

Perfect for RV's with high ceilings that are hard to reach, the Comfort Air™ Platinum Series comes equipped with wireless remote control. With all functions controlled by the remote, you no longer need to strain to reach the controls, or run complicated wires to control from a wall switch.



VARIABLE SPEED

Equipped with a unique variable speed control, the Comfort Air™ allows you to set the fan speed exactly where you want it. You have the option to set your unit at whisper quiet speeds for a nice breeze while sleeping, or set it high to quickly remove any cooking fumes or hot stale air.



REMOVABLE SCREEN

Four push tabs allow you to quickly remove the screen for easy cleaning without having to use any tools. A simple wash of the screen and a click back in, and your Comfort Air™ fan will look like new all the time.

COMFORTAIR™

*...gives you the ability to
"Create Your Own Climate."*



275-R1234



275-C1004



275-C0104

SPECS	PLATINUM SERIES	GOLD SERIES	SILVER SERIES
Ceiling Control		●	●
Remote Control	●		
Variable Speed	●	●	●
Exhaust	●	●	●
Intake	●	●	
Power Dome	●		
Thermostat	●		
Rain Sensor	●		
Circulates Air with Lid Closed	●	●	●

Comfort Air™ Circulation Systems

Designed with you in mind, all Comfort Air™ Systems provide unique features that help maximize comfort and control. The Variable Speed feature allows you to precisely adjust fan speed, providing maximum air circulation for warm days, while a slow whisper quiet speed is the perfect setting for cool, quiet evenings. The Bi-Directional Air Flow gives you the option of either pulling fresh air in, or pushing stale air out. Our specially designed fan blade is engineered to maximize air circulation by scattering air throughout your RV. Comfort Air™ is also the only circulation system that operates with the lid closed, allowing you to circulate air throughout your RV even during inclement weather. Comfort Air™ is more than just a fan; it's a complete air circulation system.

Please see page 20 for specifications and other important details for Comfort Air™ Circulation.



Installation & Maintenance tips

Pump Mounting

SOLID SURFACES are required to lessen vibration and noise. A thin surface can amplify noise.

EASY ACCESS for strainer and pump maintenance is needed, as well as space around the pump to keep it cool.

POSITIONING the pump horizontal is best, but most pumps can be mounted in any position. Pumps will push water better than pull, so mount the pump within 6 feet of the water tank for best performance.

ANCHOR the pump snug, but don't flatten the feet to keep vibration from transmitting to the system.

Inlet Side of Pump

FLEX LINES help reduce normal vibration of the pump being transmitted through the system. The lines should be rated to not collapse under pump vacuum. Collapsing inlet lines cause pump starvation, cavitation and noise. Route lines so they don't kink.

STRAINERS with adequate screen size are required to keep debris out of the pump and minimize vacuum and circulation.

VALVES for tank shut-off or winterizing should be full-port style, or as open as possible to reduce vacuum and cavitation, which cause system noise.

PUMP FITTINGS on both inlet and outlet must seal on the internal taper of the threaded pump ports. For quick-connect fittings, make sure the O-rings are lubricated and the fittings are pushed in straight. Minimize side-to-side stresses on all plumbing system fittings.

Outlet Side of Pump

FLEX LINES should be anchored where the flex meets the hard tubing and throughout the coach. Make sure plumbing does not rattle behind walls, showers and where it goes through walls and shelves. **Valves** should be full-flow with minimum back pressure. **Check Valves** on the water heater inlet keep hot water from pressurizing the cold water side of the system.

ACCUMULATORS should be charged to the restart [On] pressure of the pump to provide the best system flow, low pump cycling and smooth performance. The Extreme™ series pumps do not require an accumulator.

Pump Electrical

WIRE SIZE is very important to keep proper voltage at the pump. See the chart for wire sizing.

FUSING & SWITCHING are very important, as they allow shutting the pump off separately for service and providing an extra layer of safety in case of problems. Be careful with pump switch controllers. Older power converters may need direct wiring to the battery with the Extreme™ Series pumps.

Filtration

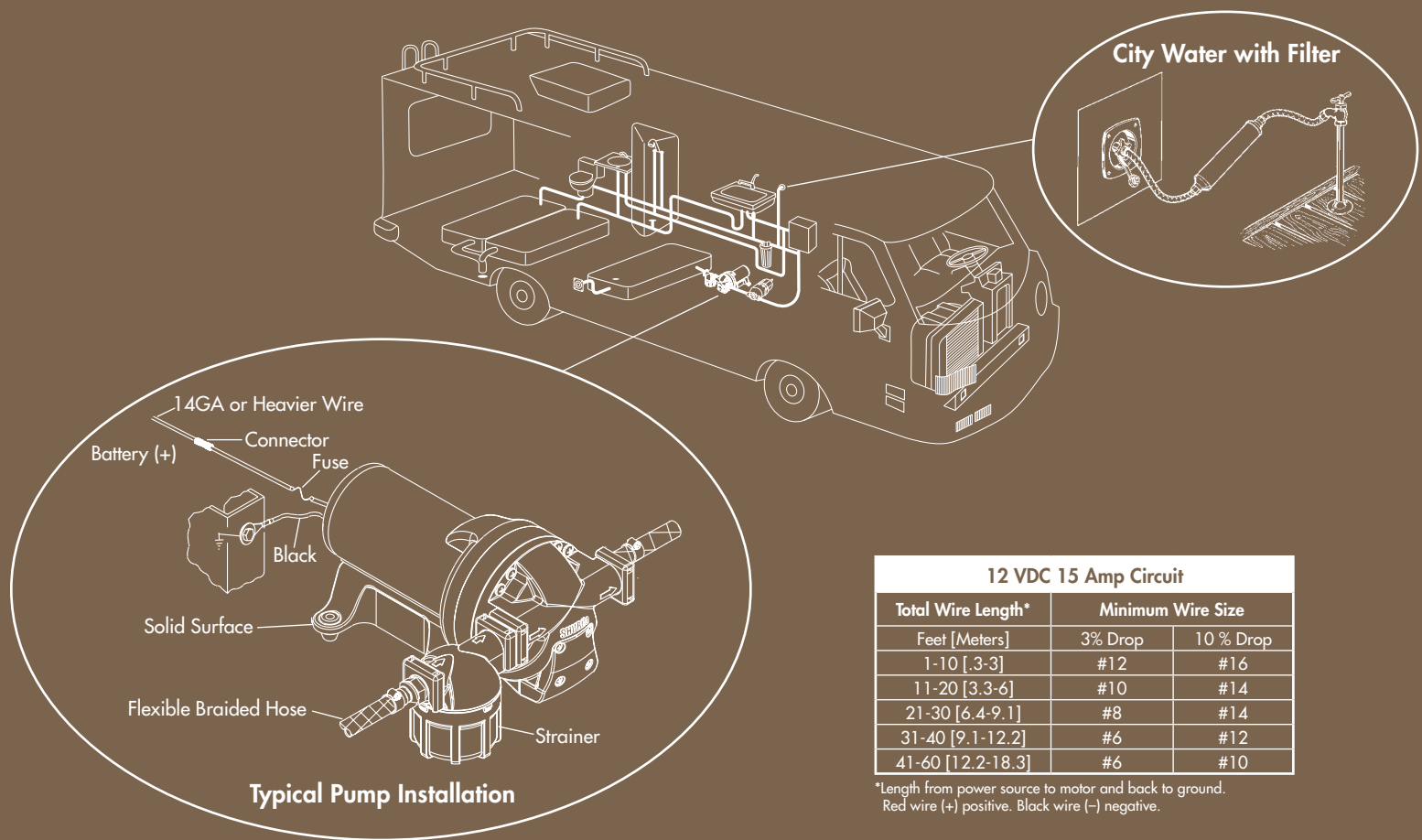
Your choice of filtration products will depend on your RV Lifestyle. From part-time to full-time, from pop-up to Class A's and beyond, Waterguard™ filters will meet your needs.

IN-LINE FILTERS are great for under-the-sink installation, separate single-tap faucets and icemakers. They are sized to meet many flow and life requirements, and can even be used to filter the water coming in through the city water entry. Be sure to make clean tubing cuts, and handle tubing carefully to avoid scratches, kinks and damage.

HOUSING & CARTRIDGE FILTERS combine the ease and convenience of a permanent installation with a variety of filter media choices to meet your needs. If the housing is installed for "Full-House Filtration", make sure the filters meet your needs. A high flow of water through a filter reduces its ability to clean the water and can create significant backpressure on the pump, creating low system pressure and flow. Most filters are only designed to filter at a low flow rate.

Filtration Continued...

If you want to use **REVERSE OSMOSIS**, the standard RV pumps are not designed for the high pressures and continuous-duty cycles that are needed. Contact SHURflo for help here. Do not use filters with water that is microbiologically unsafe or of unknown quality without adequate disinfection before or after the unit. Some state and local laws and regulations may pertain to the installation of any plumbed-in components. Check for compliance in your area. Do not install filters near a heat source. Do not allow filters to freeze. Do not expose filters to direct sunlight or Ultra Violet radiation [UV]. Do not use filters beyond stated capacity. Do not attach filters to hot water lines. Do not overpressurize filters.



General System Care

Road vibration can loosen system components. Check all plumbing components, fittings and connections regularly. If something is loose, tighten it up. Don't store things on top of plumbing system components.

SANITIZING keeps your system clean. Make sure to follow your manufacturer and component manuals for recommendations and sanitize your system. It's easy to do and helps to extend component life. Many pump and valve failures can be attributed to scaling or other build-up that could easily be prevented with proper maintenance. Bypass or remove filters before sanitizing.

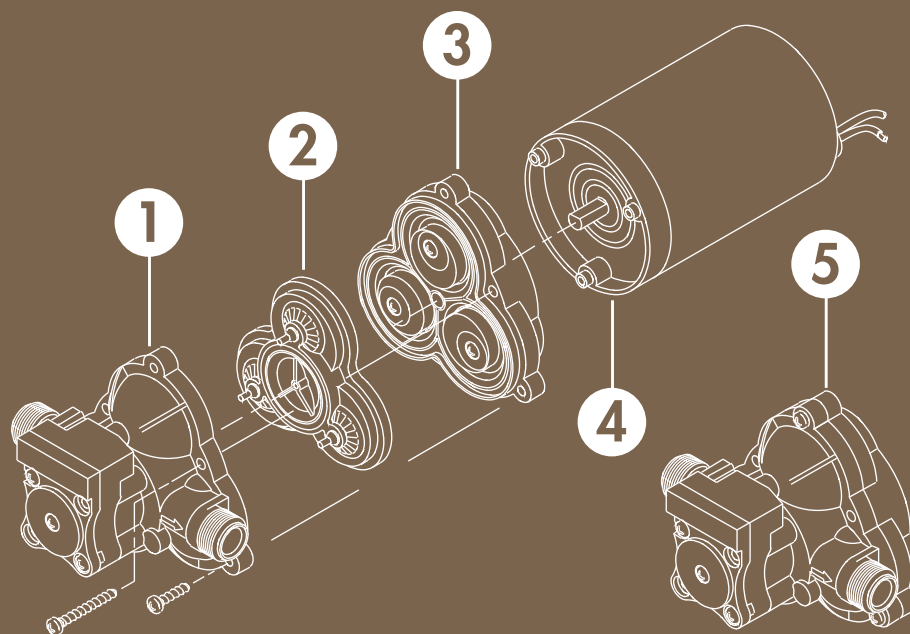
WINTERIZING Don't let plumbing system components freeze with water in them. Severe damage and flooding can result. Use winterizing procedures recommended by the coach manufacturer or your local dealer. There are many good ways to winterize systems for freezing weather and long storage.

Repair & Rebuild kits



For over 35 years, SHURflo pumps have set the standard for innovation, performance and reliability. To keep that performance and reliability at its peak, SHURflo offers a wide variety of kits for maintenance and repair. The kits listed here provide an overview of our selection. For more detailed information, please contact your nearest dealer, visit our web site at www.shurflo.com, or give us a call at (800)854-3218.

Classic™ Series Pumps



Name	Model # OEM# / Aftermarket#	Upper Housing Switch Kit	Valve Assembly, EPDM	Drive Assembly	Motor Assembly	Pumphead Repair Kit	Check Valve Kit
		1	2	3	4	5	(Not Pictured)
Classic™ Series	2088-422-144 2088-422-444	94-231-20 94-231-20	94-232-06 94-232-06	94-238-03 94-238-03	11-261-00 11-261-00	94-236-21 94-236-21	94-237-00 94-237-00
Classic™ Series	2088-403-144 2088-403-444	94-231-20 94-231-20	94-232-06 94-232-06	94-238-04 94-238-04	11-148-04 11-148-04	94-236-08 94-236-08	94-237-00 94-237-00
Classic™ Series	2088-453-144 2088-453-444	94-231-20 94-231-20	94-232-06 94-232-06	94-238-04 94-238-04	11-173-01 11-173-01	94-236-08 94-236-08	94-237-00 94-237-00
Classic™ Series Whisper King™	2093-204-113 2093-204-413	94-231-24 94-231-24	94-232-06 94-232-06	94-238-05 94-238-05	11-192-00 11-192-00	94-236-05 94-236-05	94-237-00 94-237-00
Classic™ Series	2088-492-144 2088-492-444	94-231-20 94-231-20	94-232-06 94-232-06	94-238-03 94-238-03	11-150-10 11-150-10	94-236-21 94-236-21	94-237-00 94-237-00
Classic™ Series	2088-473-143 2088-473-443	94-231-24 94-231-24	94-232-06 94-232-06	94-238-04 94-238-04	11-142-10 11-142-10	94-236-08 94-236-08	94-237-00 94-237-00

Product Specifications

Extreme™ Series & Accessories

Name	Model # OEM# / Aftermarket#	Description	Voltage	Dimensions Inches/Millimeters	Flow Rate GPM/LPM	Amps (Max.)	Shut-off Pressure
Extreme™ Series Smart Sensor™ 5.7	5900-0201 5900-0211	Seamless Shell w/Electro-Coating. Variable Speed, Multi-Fixture Pump / Amp Limiter. Thermally Protected. C-UL, CE, Ignition Protected.	12 VDC	9.25" x 5.0" x 4.75" [235 x 127 x 121 mm]	5.7 GPM [21.6 LPM]	10	65 PSI [4.5 BAR]
Extreme™ Series Smart Sensor™ 4.0	4900-0201 4900-0211	Seamless Shell w/Electro-Coating. Variable Speed, Multi-Fixture Pump w/ Amp Limiter. Thermally Protected. C-UL, CE, Ignition Protected.	12 VDC	8.25" x 5.25" x 4.75" [210 x 134 x 121mm]	4.0 GPM [16.16 LPM]	10	50 PSI [3.4 BAR]
Extreme™ Series In-Line Strainer	254-005 254-266	Quick Connect ports, for use with Extreme™ Series 5.7 Pumps. Includes Connecting Coupler and 2 clips.	N/A	3.25" x 3.25" x 2.75" [83 x 83 x 70mm]	N/A	N/A	N/A
Model # Description Style Material							
Extreme™ Series Fittings Kit	94-615-01	1/2" Barb x Quick-Connect	Straight	Polypropylene			
	94-615-00	1/2" Barb x Quick-Connect	Elbow	Polypropylene			
	94-615-04	3/4" Barb x Quick-Connect	Straight	Polypropylene			
	94-615-05	3/4" Barb x Quick-Connect	Elbow	Polypropylene			
	94-637-00	Quick-Connect x Quick-Connect	Coupler	Polypropylene			
	94-615-06	1/2" MPT x Quick-Connect	Straight	Polypropylene			

Classic™ Series Multi-Fixture Automatic Demand Pumps 12 VDC & 24 VDC

Name	Model # OEM# / Aftermarket#	Description	Dimensions Inches/Millimeters	Flow Rate GPM/LPM	Amps (Max.)	Shut-off Pressure	Warranty
Premium Plus Pump	2088-453-144 2088-453-444	12 VDC	8.60" x 5.00" x 4.45" [218 x 127 x 113 mm]	3.5 GPM 12.5 LPM	5	45 PSI 3.1 BAR	2 Years
SHURflo Classic™ Pump	2088-422-144 2088-422-444	12 VDC	7.84" x 5.00" x 4.62" [199 x 127 x 117 mm]	2.8 GPM 10.6 LPM	7	45 PSI 3.1 BAR	2 Years
Whisper King™ SHURflo Classic™ Pump	2093-204-113 2093-204-413	12 VDC	7.75" x 5.00" x 4.45" [197 x 127 x 113 mm]	2.0 GPM 7.5 LPM	5.5	30 PSI 2.1 BAR	3 Years
Standard Pump	2088-473-143 2088-473-443	24 VDC	7.75" x 5.00" x 4.40" [197 x 127 x 112 mm]	2.8 GPM 10.6 LPM	2.5	30 PSI 2.1 BAR	2 Years
Park Model	2088-492-144 2088-492-444	115 VAC	8.70" x 5.00" x 4.50" [221 x 127 x 113 mm]	3.3 GPM 12.5 LPM	0.9	45 PSI 3.1 BAR	2 Years

General Purpose Pumps

Name	Model # OEM# / Aftermarket#	Description	Dimensions Inches/Millimeters	Flow Rate GPM/LPM	Amps (Max.)	Port Size
Nautilus™	100-000-21 100-009-21	12VDC-Single Fixture Water Delivery. Thermal Overload-UL Marine Must Have In-line Switch & 3 Amp Fuse. Use: Single Fixture Applications.	4.80" x 2.60" x 1.92" [122 x 66 x 49 mm]	1.0 GPM 3.7 LPM	2.5	3/8" Barb
SLV (OEM only)	105-003 N/A	12 VDC - Single Fixture Water Delivery. Automatic Demand, 30 PSI.	6.82" x 3.94" x 2.45" [17.3cm x 10cm x 6.2cm]	1.0 GPM 3.7 LPM	2.5	3/8" Barb
Macerator Pump	3200-200 3200-001	Designed Specifically for Sanitation Waste Evacuation. Features Premium Impeller with Run-dry Capability. Seamless Shell Motor w/ O-ring Sealed Endbells and Manual Turnkey.	10.79" x 3.82" x 4.48" [272 x 97 x 114 mm]	13.0 GPM 5.0 LPM	14	Inlet 1.5" Barbs/1.5" NPT Outlet 1" Barb
Standard General Purpose Pump	8050-305-226 8050-305-526	12VDC-Ignition Protected. CE Version Available. 5' [2.1m] Prime. Hose Kit Included Uses: Winterizing, Oil Change and Liquid Transfer.	6.1" x 4.4" x 3.7" [155 x 112 x 94 mm]	3.75 GPM 14.1 LPM	7.5	3/8" F NPT Int 3/4" GSH M Ext
Premium General Purpose Pump	N/A 8050-305-626	12VDC-Same as Standard, Includes 8' [2.4m] Cable w/Battery Clips & Reversible Switch. Hose Kit Included. CE Version Available. Uses: Winterizing, Oil Change and Liquid Transfer.	7.5" x 4.4" x 3.7" [190 x 112 x 94 mm]	3.75 GPM 14.1 LPM	7.5	3/8" F NPT Int 3/4" GSH M Ext
Oil Change System	8050-305-426 8050-305-426	12VDC-8' [2.4m] Cable w/Battery Clips. CE Version Available. Reversible Switch. Hose Kit and 3.5 Gal. [13L] Storage Container. Uses: Winterizing, Oil Change and Liquid Transfer.	16" H x 12.5" D [406 x 318 mm]	3.75 GPM 14.1 LPM	7.5	3/8" F NPT Int 3/4" GSH M Ext

Accumulator Tanks

Name	Model # OEM# / Aftermarket#	Dimensions	Total Volume	Maximum PSI	Precharged
24 oz. Nylon Tank Includes Fittings	182-100 182-200	8.90" [23 cm] H, 4.06" [10 cm] D	24 oz. [710 ml]	125 PSI [8.75 BAR]	30 PSI [2.1 BAR]
2 Gallon Stainless Steel Tank	3400-002 3400-002	12" [30 cm] H, 9" [23 cm] D	2 Gal. [8.0 L]	100 PSI [7.0 BAR]	20 PSI [1.4 BAR]



Water System Accessories

Name	Model # OEM# / Aftermarket#	Description	Designation
Classic Series™ Strainers			
Twist-on Water Strainer*	255-223* 255-323*	Easy Assembly. Keeps Debris Out of Pump. Easy to See When Strainer Needs Cleaning. 50 Mesh Stainless Steel Screen.	1/2" [13mm] Barb Inlet
Twist-on Water Strainer*	255-213* 255-313*	Easy Assembly. Keeps Debris Out of Pump. Easy to See When Strainer Needs Cleaning. 50 Mesh Stainless Steel Screen.	1/2" [13mm] Pipe Inlet Male
Swivel Nut Water Strainer *	255-225* 255-325*	Easy Assembly. Keeps Debris Out of Pump. Easy to See When Strainer Needs Cleaning. 50 Mesh Stainless Steel Screen.	1/2" [13mm] Barb Inlet
Pump Silencing Kit			
Pump Silencing Kit	Call for Details 94-591-01	Includes (2) 30" Risers and (2) 1/2" MPT Couplers.	Includes (2) 30" Risers and (2) 1/2" MPT Couplers
Hose Spray			
In-Line Check Valve	340-000 340-001	Allows Flow in One Direction Only to Safeguard Against Backsurge Up to 100 PSI [6.8 BAR].	1/2" Barb Ports
Hose Spray			
Hose Spray Nozzle	94-010-00	High Impact Plastic for Long Life. Use with SHURflo Pumps or Garden Hose. Adjusts From Fine Mist to Full Stream. Lock Clip for Continuous Spray.	3/4" (F) Garden Hose Thread

* For use with models 2088 and 2093

Pressure Reducing City Water Entries

Name	Model # OEM# / Aftermarket#	Model # OEM# / Aftermarket#	Color
50 PSI Model		65 PSI Model	
Wall Mount Pressure Regulator	N/A	183-020-11 183-029-11	Cream Cream
Wall Mount Pressure Regulator	N/A	183-020-14 183-029-14	Chrome Chrome
Wall Mount Pressure Regulator	N/A	183-020-18 183-029-18	Gel White Gel White
In-Line Pressure Regulator	183-010-01 183-039-01	N/A	Cream Cream

Nylon Fittings

Model #	Style	Material	Description
Straight Fittings			
244-2916	Hex-Wing Swivel	Nylon	3/8" Barb x 1/2" NPT (F)
244-2926	Hex-Wing Swivel	Nylon	1/2" Barb x 1/2" NPT (F)
244-2936	Hex-Wing Swivel	Nylon	5/8" Barb x 1/2" NPT (F)
244-2946	Hex-Wing Swivel	Nylon	3/4" Barb x 1/2" NPT (F)
244-2926	Hex-Wing Swivel	Nylon	1/2" Barb x 1/2" NPT (M)
244-5146	Coupling	Nylon	3/4" Barb x 1/2" NPT (F)
244-2866	Swivel Coupling	Nylon	1/2" NPT (F) x 1/2" NPT (F)
Elbow Fittings			
244-3916	Hex-Wing Swivel	Nylon	3/8" Barb x 1/2" NPT (F)
244-3926	Hex-Wing Swivel	Nylon	1/2" Barb x 1/2" NPT (F)
244-3936	Hex-Wing Swivel	Nylon	5/8" Barb x 1/2" NPT (F)
244-3946	Hex-Wing Swivel	Nylon	3/4" Barb x 1/2" NPT (F)
244-3366	Hex-Wing Swivel	Nylon	1/2" NPT (M) x 1/2" NPT (F)
244-6126	Coupling	Nylon	1/2" Barb x 1/2" NPT (M)
Tee Fittings			
244-4522	Barb Tee	Nylon	1/2" Barb x 1/2" Barb x 1/2" Barb
Hose Adapter Fittings			
244-2356	Swivel Hexing Garden Hose Adapter	Nylon	1/2" NPT(F) x 3/4" GHT (M)



Faucets

Name	Model # OEM# / Aftermarket#	Voltage	Amps (Max.)	Operation	Spout Rotation	Color
Electric Faucet	94-009-00 94-009-10	12VDC	3	Single	360°	White
Electric Faucet	94-009-01 N/A	12VDC	3	Single	360°	Gray
Water Faucet without Switch	N/A 94-009-12	No Switch	N/A	Single	360°	White
Water Faucet without Switch	94-009-03 94-009-13	No Switch	N/A	Dual Hot & Cold	360°	White
Electric Faucet & Pump Combo w/100 Series Nautilus™	94-009-21 94-009-20	12VDC	3	Single	360°	White
Electric Faucet (white) & Pump Combo w/105 Series Pump	94-009-22 N/A	12VDC	3	Single	360°	White
Electric Faucet (gray) & Pump Combo w/105 Series Pump	94-009-23 N/A	12VDC	3	Single	360°	Gray
Single Touch Faucet	15-045-02 N/A	N/A	N/A	Single	Twist	Chrome

Waterguard™ Filtration

Name	Model # OEM# / Aftermarket#	Filters Up To (Gallons)	Flow Rate (Maximum)	Pressure (Minimum/Maximum)	Filter Size and Fitting
In-Line Filters (Aftermarket)					
Universal In-Line Filter	94-009-50	7000 [26,500 L]	1.5 GPM [5.7 LPM]	20/125 PSI [138/862 BAR]	10" [254mm] KDF/GAC Filter, 1/4" FPT, 1/2" MPT, John Guest™ and Colder Fittings.
Filter Kit W/Monitoring Faucet	94-009-51	7000 [26,500 L]	1.5 GPM [5.7 LPM]	20/125 PSI [138/862 BAR]	10" [254mm] Filter with KDF, John Guest™ Fittings both Ends.
2.5"x11" In-Line Filter [64 x 279 mm]	RV-210GH-KDF-A	15,000 [56,800 L]	2.5 GPM [9.5 LPM]	20/125 PSI [138/862 BAR]	11" [279mm] Filter with KDF, Male/Female Garden Hose Ends.
Bypass Fitting	8-668-00	N/A	N/A	N/A	1/4" x 1/4" John Guest™
In-Line Filters (OEM)					
2"x10" In-Line Filter [51 x 254 mm]	RV-10MPT	7,000 [26,500 L]	1.5 GPM [5.7 LPM]	20/125 PSI [138/862 BAR]	10" [254mm] Filter, 1/2" MPT Ports.
1/4" Filter Tubing 500 ft. Reel	U-PT4-500	N/A	N/A	N/A	N/A
Filter Mounting Bracket for all In-Line filters	HF-CLIP1	N/A	N/A	N/A	N/A

Filter Housings

Name	Model # OEM# / Aftermarket#	Bypass Valve	Cartridge Included	Replacement Cartridges Available	Filter Size and Port	Accessories Included
Filter Housings (Aftermarket)						
10" Housing Assembly	RV-10UC-A	No	RV-10C1	RV-10C1, RV-10VOC, RV-10KDF, RV-10LC1, RV-10PS	10" Housing, 1/2" FPT	M/F Garden Hose Fittings, 12" Garden Hose, Wrench, Mounting Bracket, Screws.
10" Bypass Housing Assembly	RV-10VIH-A	Yes	RV-10C1	RV-10C1, RV-10VOC, RV-10KDF, RV-10LC1, RV-10PS	10" Housing, 1/2" FPT	M/F Garden Hose Fittings, 12" Garden Hose, Wrench, Mounting Bracket, Screws.
Filter Housings (OEM)						
10" Housing Assembly	RV-10UC	No	RV-10C1	RV-10C1, RV-10VOC, RV-10KDF, RV-10LC1, RV-10PS	10" Housing, 1/2" FPT	M/F Garden Hose Fittings, Wrench, Mounting Bracket, Screws.
10" Housing Assembly	RV-10UC-KDF	No	RV-10KDF	RV-10C1, RV-10VOC, RV-10KDF, RV-10LC1, RV-10PS	10" Housing, 1/2" FPT	M/F Garden Hose Fittings, Wrench, Mounting Bracket, Screws.
10" Bypass Housing Assembly	RV-10VIH	Yes	RV-10C1	RV-10C1, RV-10VOC, RV-10KDF, RV-10LC1, RV-10PS	10" Housing, 1/2" FPT	M/F Garden Hose Fittings, 12" Garden Hose, Wrench, Mounting Bracket, Screws.



Replacement Cartridges

Name	Model # Aftermarket#	Cartridge Media	Water Contaminant Reduction	Filters Up To (Gallons)	Flow Rate (Maximum)
10" Replacement Cartridge	RV-10CI-A	Carbon Paper	Reduces Chlorine by 97%, Cloudy Water and Sediment.	1,000	2.5 GPM
10" Replacement Cartridge	RV-10VOC-A	Water Washed Coconut Shell GAC	Reduces Harmful Volatile Organic Contaminants (VOC), Reduces Chlorine by 96%, Cloudy Water and Sediment.	1,000	2.5 GPM
10" Replacement Cartridge	RV-10KDF-A	Bacterialstatic KDF-55D & Water Washed Coconut Shell GAC	Reduces Chlorine, Cloudy Water and Sediment.	11,000	2.5 GPM
10" Replacement Cartridge	RV-10LCl-A	ATS™ Lead Sorbent Carbon Block	Reduces Cysts by 99.9%, Lead by 96%, Giardia and Chlorine.	1,000	2.5 GPM
10" Replacement Cartridge	RV-10PS-A	Pleated Paper	Reduces Sediment.	N/A	2.5 GPM

Everpure® Filtration

Name	Model # Aftermarket#	Cartridge Media	Water Contaminant Reduction
Everpure® Complete Water Purification System and POP Display	EV925200	Micro Pure® Pleated	Exclusive Micro-Pure Protection Reduces Particulate as Small as 1/2 Micron in Size, Reduces Chlorine Taste and Odor, Filter Lasts up to One Year, Includes Superchlorination Disinfection Kit*, Protects Against Viruses, Bacteria and Water-Borne Cysts** Not Performance Tested or Certified by NSF. 2 Pack.
Everpure® Complete Water Purification System	EV925205	Micro Pure® Pleated	Exclusive Micro-Pure Protection Reduces Particulate as Small as 1/2 Micron in Size, Reduces Chlorine Taste and Odor, Filter Lasts up to One Year, Includes Superchlorination Disinfection Kit*, Protects Against Viruses, Bacteria and Water-Borne Cysts** Not Performance Tested or Certified by NSF. 2 Pack.
ADC Bacteriostatic Requirements Cartridge (6pk)	EV959206	Carbon Block	Reduces Chlorine Taste and Odor, Reduces 99.9=% of All Particles 1/2 Micron and Larger in Size. 6 Each.
ADC Part Timer Twin Pack	EV959207	Carbon Block	Reduces Chlorine Taste and Odor, Reduces 99.9=% of All Particles 1/2 Micron and Larger in Size. 6 Each.

Comfort Air™ Ceiling Fans

Name	Model # OEM# / Aftermarket#	Description
Comfort Air™ Silver	275-C0101 275-C0104	White Dome Variable Speed Fan, Manual Dome Operation, Exhaust Only, 12 Volts DC, Fits Standard 14" x 14" Opening.
Comfort Air™ Gold	275-C1101 275-C1004	Smoke Dome Variable Speed Fan, Bi-directional Airflow, Motorized Dome Operation, Automatic or Manual Operation, 12 Volts DC, Fits Standard 14" x 14" Opening.
Comfort Air™ Platinum	275-R1331 275-R1234	Smoke Dome Remote Controlled Fan, Variable Speed, Bi-Directional Airflow, Motorized Dome, Automatic or Manual operation, 12 Volts DC, Thermostat, Rain Sensor, Fits Standard 14" x 14" Opening.





SHURflo®
Pentair Water



www.shurflo.com

SHURflo, LLC Headquarters*

Mailing Address: 5900 Katella Avenue, Cypress, California 90630
Shipping Address/UPS: 5900 Katella Avenue, Bldg. C, Cypress, California 90630
Phone (562) 795-5200 Toll Free (800) 854-3218 Fax (562) 795-7564

SHURflo East

52748 Park Six Court, Elkhart, Indiana 46514-5427
Toll Free (800) 854-3218 Fax (574) 264-2169

SHURflo Europe, Middle East, Asia

SHURflo Limited
Unit 5, Sterling Park, Gatwick Road, Crawley, West Sussex, RH10 9QT, UK
Phone 44-(0)-1293-424-000 (800) 854-3218 Fax 44-(0)-1293-421-880