



# AIRSTREAM

EUROPEAN TRAVEL TRAILERS

Monday. Tuesday. Wednesday. Thursday. Friday. Saturday. Sunday.

Get out of town.



y. Wednes  
Friday



## Today.

Seventy-five years ago, Wally Byam began building not just a product but a way of life. He created something at once shiny, streamlined, womblike and useful — and that seven decades later is still modern and powerfully evocative. He fanatically demanded the best in product quality, fashioning trailers that are the envy of the industry, and that many customers lust after. Most important, however, he ignited a uniquely American passion for travel, which he even captured in his own creed: “To strive endlessly to stir the venturesome spirit that moves you to follow a rainbow to its end ...”

Today, Airstream is once again the perfect vehicle for chasing dreams, pursuing the moment and enjoying a broad, expansive vision of life.

**Airstream is proud to launch its first range of trailers designed exclusively for European roads.**

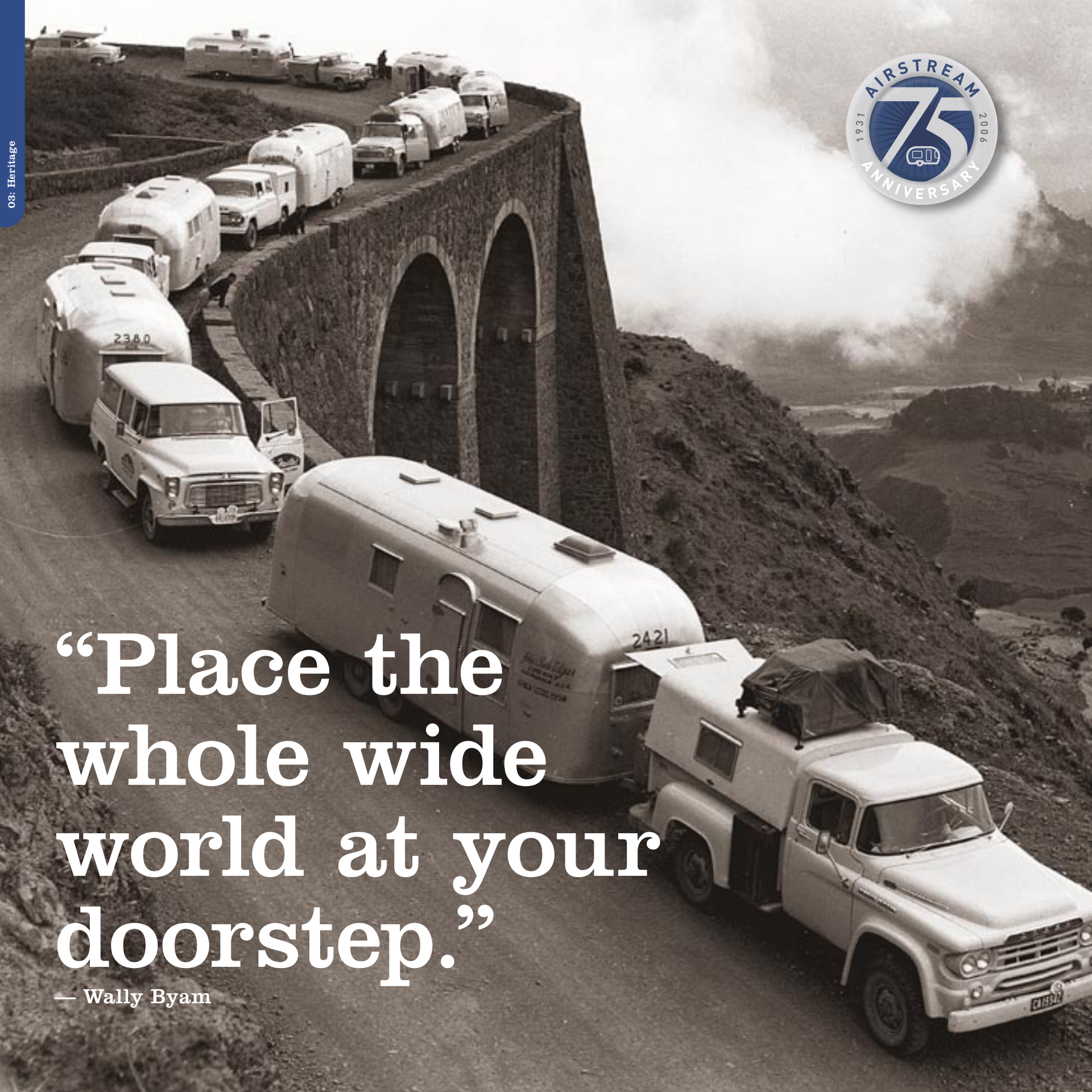
**See more. Do more. Live More.**

*Actual production models will differ from those portrayed in brochure photographs. See floorplans and specifications for more details.*



“Place the whole wide world at your doorstep.”

— Wally Byam



Selected text from *Wanderlust: Airstream at 75* by Russ Banham.  
Published by Greenwich Publishing Group

**The sunlight gleaming off the silver flock in the grassy Midwestern field was blinding.** One hundred and sixty-five Airstream trailers and motorhomes had come from all across America, like swallows to Capistrano, to rest on this wide-open lawn this bright summer day — drawn home, in most every case, to the place of their birth. Jackson Center, Ohio, quiet outpost in the heart of America’s farmland, is not generally thought of as the center of the universe. But it may as well have been for the obsessed hundreds who roamed the fields, parking lots, service center and assembly lines of Airstream’s factory here, swapping stories, inspecting trailers, watching old movies, mingling with employees and townspeople, and eating burgers flipped by the company’s CEO. After all, these were “Airstreamers” —devout owners of America’s iconic brand of travel trailer — and this was the company’s revived Homecoming Festival, the owners’ first chance to bring their Space Age rigs back to the mothership for a five-day party with likeminded travelers.

**From the time they first acquired their alluring aluminum shell, Airstreams have been a magnet for designers, architects and visionary owners eager to match interior spaces to their personal aspirations for color, texture and utility.**

#### PRETTY GOOD BUSINESS

In 1929, Wally Byam purchased a Model T Ford chassis, built a platform on it and towed it with his car to a campsite in Oregon’s mystic Blue Mountains, where he painstakingly erected a tent on the platform. The effort was tiresome and unpleasant, especially when it rained. [His wife] Marion, meanwhile, complained about the “rougher” aspects of tent living. To ease his burden and appease his wife, Wally built a tear-drop-shaped permanent shelter on the platform that enclosed a small ice chest and kerosene stove. Wally then published an article that ran under the headline, “How to Build a Trailer for One Hundred Dollars.” Readers wrote Wally for more detailed instruction plans, which the publisher insisted he provide for 10 cents apiece. Always the shrewd businessman, Wally instead took out an ad in *Popular Mechanics* advertising a “mimeographed booklet with drawings” on building his trailer, at a cost of one dollar each. The response was extraordinary, earning him more than \$15,000.

One day, a neighbor came by and inquired if Wally would build a trailer for him just like the one he had parked out front. Wally agreed, and hired a handyman to build it in his backyard. “That was no sooner finished when the fellow next door wanted one,” Wally said. The handyman was put to work again. “Then, the neighbors started complaining that I was making too much noise,” Wally observed, “so I went out and rented a building.” In 1932 his first trailers for sale to the public made their debut.

**Wally christened them “Airstreams” - because they cruised down the road “like a stream of air,” he explained.**

#### ‘THERE’S A SPIRITUAL ASPECT TO OWNING ONE’

Seven decades after Wally Byam introduced Airstream’s first aluminum trailer, art historians and design teachers still extol the trailer’s purity, authenticity and emotional appeal. “Airstream trailers are domesticated streamlined industrial fabrications. No one has yet to surpass them,” said architect Margaret McCurry in *Architectural Digest*. Added Geoff Wardle, chair of the transportation design department at Pasadena’s Art Center College of Design, “It is the self-contained living accommodation that offers a very easy explanation of what its function is. You know it is meant to be lived in and you know it is an object to be moved through air, unlike other trailers and motorhomes. The Airstream really is a pure object, which is why it has lasted so well.” Indeed, of the 400 travel trailer manufacturers in business shortly after Airstream’s birth, only Airstream remains.



Wally Byam shapes the future of mobile living: “I began to think this might be a pretty good business to get into . . .”

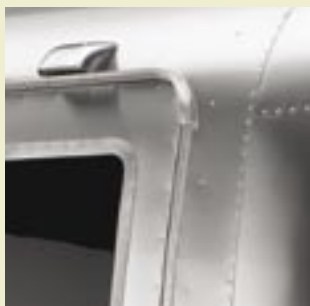


2006 AIRSTREAM INTERNATIONAL &amp; SAFARI

# THE FUTURE IS NOW



See the world mirrored in an Airstream's gleaming skin. "At the beach you get the blue; in the woods you get the green," says award-winning Airstream designer Chris Deam.



**It's all here.** Airstream's cutting-edge line of travel trailers lead the way in cross-continent versatility, high-design interiors and ultramodern amenities. Award-winning architect and designer Christopher C. Deam brings together an ideal balance of form and function within the Airstream's sleek frame. Here is the essence: equipped for a dynamic lifestyle with 24/7 programmable ALDE wet central heating, a stellar sound system and optional SONY flat-panel televisions. Styled for your aesthetic delight with polished aluminum interiors and modern colour schemes. Every colour, surface, shape and texture contribute to an atmosphere of cheery, relaxed modernism. Combine this with the engineering passion and 75 years of road-tested know-how for which Airstream is famous - and welcome the critically acclaimed, drop-dead gorgeous **Airstream International** and **Safari** travel trailers.



With the exterior's gorgeous gleaming curves and a critically acclaimed interior design, you'll turn heads wherever you roam.

Model 684



Model 532

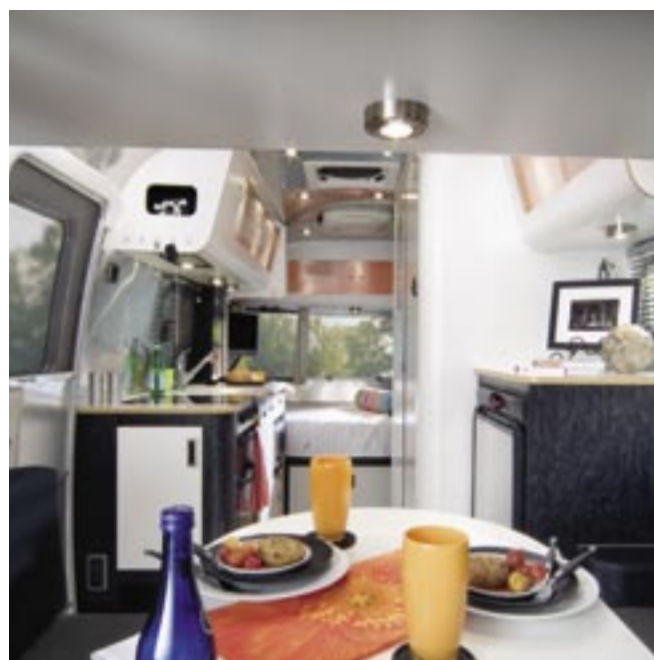


Get on board.

*(left and below)* The **INTERNATIONAL** décor has modern colour options that complement its aluminium and black maple laminate interior.



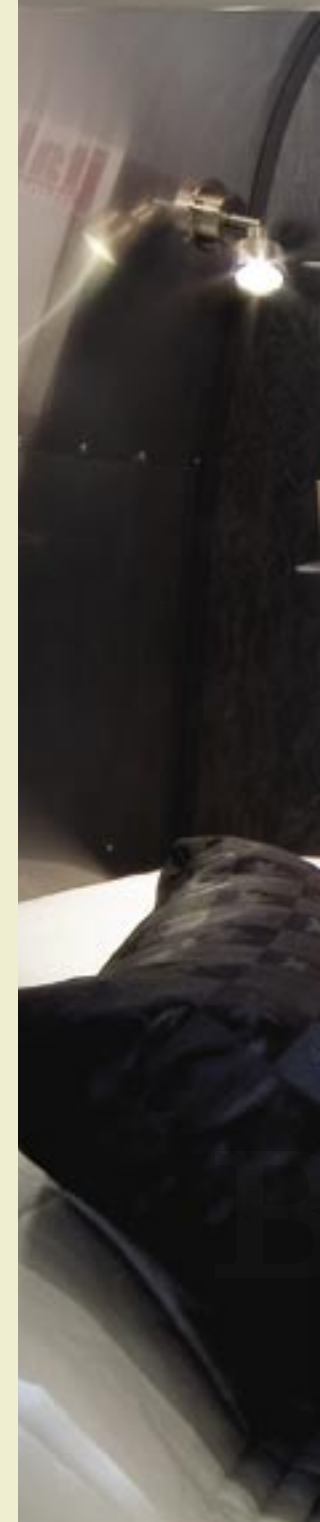
*(right)* **SAFARI** is a classic interior décor, with gold and honey toned fabrics.



The gleaming aluminum reflects the stylish, practical, and eye-catching amenities of these trailer lines - both inside and out. Discreet details reveal themselves within: backlit overhead storage compartments are closed with translucent plexiglass sliding doors; Vista-View and wrap-around windows bring the outside in or provide a serene private space; streamlined kitchens contain a stainless steel sink, chrome fixtures, a top-of-the-line Spinflo oven and more for easy meal preparation; deluxe bedroom mattresses and under-bed storage give a good night's sleep and a place to put your belongings.

**Airstream International** is packed with everything you need for modern mobile living - while still leaving plenty of room to relax.

**Airstream Safari** is another optional interior décor . . . Warm, rich furniture manufactured by MOSER of Germany blends perfectly with gold and honey toned Belgian fabrics by Leisure Furnishings of England . . . colour matched removable carpets are optional with the Safari.





● "I wanted the interior to deliver on the promise of the exterior," says designer Chris Deam.



Be here now.

here now

## 2006 AIRSTREAM FLOORPLANS &amp; SPECIFICATIONS

## INTERNATIONAL &amp; SAFARI

SPECIFICATIONS FOR MODEL:	532	684 (DBLE OR TWIN)	STANDARD EQUIPMENT - BODY SHELL	532	684 (DBLE OR TWIN)
Berths	2	4	Pre-coated bright aluminium finish (roof finish - white)	Std	Std
Fixed double bed	N/A	1500 x 1828mm / 4ft 11" x 6ft	45mm thick aluminium framed walls with 60mm insulation	Std	Std
Fixed twin beds	N/A	2000 x 760mm / 7ft 6.75" x 2ft 6"	Stretch formed aluminium front and rear panels	Std	Std
Convertible seating	2016x2006mm / 6ft 7.25" x 6ft 7"	2006 x 1370mm / 6ft 7" x 4ft 6"	S/steel stone protectors to front lower panels	Std	Std
			S/steel grab handles front and rear	Std	Std
			Lockable LPG compartment to suit EU bottle sizes	Std	Std
			Moulded drawbar cover and coupling shroud	Std	Std
			66cm / 26" wide door with cast hinges & inner fly screen	Std	Std
			Cast aluminium grab handle to entrance door	Std	Std
			Integral pull out step to entrance door	Std	Std
			LED porch light with cast aluminium casing	Std	Std
			LED taillights with cast aluminium bezels	Std	Std
			Enamelled aluminium nameplate medallion	Std	Std
			Polished aluminium rear bumper	Std	Std
			Curved profile aerodynamic skirting on all sides	Std	Std
<b>DIMENSIONS</b>			<b>WINDOWS, ROOFLIGHTS ETC.</b>		
Shipping length	6808mm / 22ft 4"	8250mm / 27ft 0.75"	Front panoramic windows	Std	Std
Internal length	5315mm / 17ft 5.25"	6806mm / 22ft 4"	90cm wide opening rear window	1	0
External width	2216mm / 7ft 3.25"	2216mm / 7ft 3.25"	Rear panoramic windows	N/A	Std
Internal width	2126mm / 6ft 11.75"	2126mm / 6ft 11.75"	45cm vista view rooflights	0	3
External height (excl. AC)	2650mm / 8ft 8.5"	2650mm / 8ft 8.5"	76cm vista view rooflights	1	0
Maximum headroom	1990mm / 6ft 6"	1990mm / 6ft 6"	45cm porthole stack windows	1	0
			76cm porthole stack windows	0	2
			45cm opening side windows	0	4
			76cm opening side windows	2	0
			Midi Heki rooflight	1	1
			Rooflight with 12v Fantastic fan to main cabin	Std	Std
			45cm wide storage compartment door	1	1
			76cm wide storage compartment door	1	0
			90cm wide storage compartment door	0	1
<b>WEIGHTS (PREDICTED)</b>			<b>CHASSIS &amp; SUB STRUCTURE</b>		
MTPLM	1600kg	2200kg	48mm thick sandwich floor - styrofoam insulation	Std	Std
MIRO (TBC)	1300kg	1800kg	BPW galvanised steel chassis, with outriggers	Std	Std
Payload	300kg	400kg	BPW 1600kg torsion bar axle, for smoother ride	1	N/A
Essential habitation (see breakdown)	137kg	168kg	BPW 1350kg load compensating torsion bar axles	N/A	2
Personal effects allowance (10N + 10L + 30)	100kg	140kg	Jockey wheel with noseweight indicator (to 125kg)	Std	Std
Optional equipment (see options list)	63kg	92kg	EU compliant over-run braking system	Std	Std
Noseweight (laden, depends on options fitted & loading)	75-100kg	125-140kg	Winterhoff ZAF2,0-2 coupling with WS3000 stabiliser	1	N/A
A frame & coupling rating	150kg	150kg	Winterhoff ZAF2,8-2 coupling with WS3000 stabiliser	N/A	1
Coupling height	433mm	463mm	Diamond cut lacquered / black painted 15" alloy wheels	2	N/A
Tyres	205 / 65R15 LI102T	185 / 65R14	Diamond cut lacquered / black painted 14" alloy wheels	N/A	4
Tyre pressures	51psi	TBC	Heavy duty corner steadies with big foot spreader pads	4	4
<b>ESSENTIAL HABITATION WEIGHT</b>			<b>ELECTRICAL</b>		
LPG bottles 5kg BP Gas Light (2 x 4.5kg empty)	9kg	9kg	Sargents EC300 control panel with LCD display	Std	Std
90% of LPG contents (5kg x 2 x 90%)	9kg	9kg	Sargents Power Supply Unit with 25amp 3 stage charger	Std	Std
Alde Compact 3010 boiler hot water tank	8.4kg	8.4kg	Sargents wiring harnesses throughout	Std	Std
Glycol/ water mix in Alde boiler reservoir	3.5kg	3.5kg			
Glycol/ water mix in Alde expansion tank, rads & piping	7.7kg	9.5kg			
Fresh water tank (45L = 45kg x 90%)	40.5kg	40.5kg			
Leisure battery - VARTA 110A/hr (12V)	29.5kg	29.5kg			
2nd Leisure battery - VARTA 100A/hr	N/A	29.5kg			
Spare wheel/ tyre and spare wheel carrier	25.4kg	25.4kg			
15amp mains hook up cable	4kg	4kg			
<b>TOTAL in Kg</b>	<b>137kg</b>	<b>168.3kg</b>			
<b>Additional Options Weight</b> (allowance TBC)					
Caravan Mover (Reich) - NB 2 required for twin axle	30kg	60kg			
AV upgrade 1 (Sony 15" LCD TV, DVD/CD, Freeview)	8kg	8kg			
AV upgrade 2 (Sony 20" LCD TV, DVD/ CD, Freeview)	10kg	10kg			
Microwave (Sharp R-26STM, 800W)	13.5kg	13.5kg			
Air conditioning (Dometic B1500S, 1.5kW)	31kg	N/A			
Air conditioning (Dometic B2100, 2.1kW)	N/A	34kg			
Inverter (Mobitronic 150W)	1.5kg	1.5kg			
Below floor fresh and water water tanks (each 45L)	N/A	20kg			
Loose lay carpets (Safari interior option)	8kg	7kg			
<b>TOTAL in Kg (excl. AV upgrade 1)</b>	<b>94kg</b>	<b>146kg</b>			

<b>ELECTRICAL (CONTINUED)</b>	<b>532</b>	<b>684 (DBLE OR TWIN)</b>
Ceiling / under roof locker low voltage lights (6 circuits)	20	TBC
Wall mounted reading lights, switched from fitting	2	4
230v power outlets, internal use	5	TBC
IP rated 230v socket, 12v socket & TV outlet for external use	1	1
Reich Fuse Control, for monitoring 230v current draw	Std	Std
Pre-wired for optional air conditioning	Std	Std

#### PLUMBING, AV & OTHER SYSTEMS

Alde 3010 boiler & wet central heating system	Std	Std
Above floor fresh water tank (45L) with level sensors	Std	Opt
Whale Aquasmart onboard fresh water pump & solenoids	Std	Std
Additional gravity water fill inlet to fresh water tank	Std	Std
John Guest hot and cold water piping and fittings	Std	Std
Rigid 38mm wastepiping with gate dump valve	Std	Std
Dometic VT2500 vacuum toilet with 14L cassette	Std	Std
EU spec gas manifold, 8 & 10mm gas piping & fittings	Std	Std
Metal bodied taps and shower mixer valve	Std	Std
External utility shower	Std	Std

#### APPLIANCES & AUDIO VISUAL

Dometic 7541L 3 way fridge (110 litre)	Std	N/A
Dometic 7601L 3 way fridge with separate freezer (142L)	N/A	Std
Spinflo Triplex combination oven/ grille & 3 burner hob	Std	Std
Spinflo Argent sink and drainer with glass lid	Std	Std
Dometic CK150 extractor above cooking hob	Std	Std
12v extract fan to bathroom	Std	Std
Status 530 directional TV & FM antenna	Std	Std
CD / radio and 4 speakers	Std	Std

#### INTERIOR

Moser Möbeltechnik joinery components throughout	Std	Std
Slatted seat / mattress bases with gas struts	Std	Std
Leisure Furnishings seating upholstery & cushions	Std	Std
Blackout lined curtains to panoramic windows	Std	Std
Oceanair Railshade blackout blinds to other windows	Std	Std

#### PRICE

Base vehicle price to standard specification	RRP £34,880	RRP £41,780
Contact us for pricing in other territories		

#### On The Road Pack

BP Gas Light propane bottles	inc	inc
Propane (GB), water & waste hoses	inc	inc
Aquaroll and Wastemaster (if required)	inc	inc
VARTA 110A/hr 12v leisure battery	inc	inc
Spare wheel / tyre and spare wheel carrier	inc	inc
Car registration plate	inc	inc
Pre-delivery inspection & full valet	inc	inc
Delivery (manufacturer to UK distributor)	inc	inc
<b>TOTAL:</b>	<b>£500</b>	<b>£500</b>

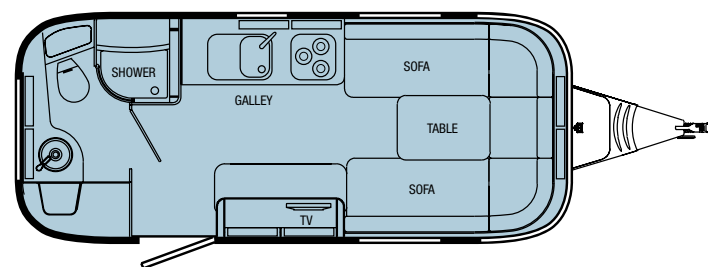
<b>Recommended Options Pricing</b>	<b>532</b>	<b>684 (DBLE OR TWIN)</b>
Phantom Tracker installation	£499	£499
Phantom Tracker subscription	£99	£99
BPW wheel immobiliser	TBA	TBA
BPW Robstop hitchlock	£90	£90
Shield Insurance scheme for Airstream	TBA	TBA
<b>TOTAL:</b>	<b>£688</b>	<b>£688</b>

#### Additional Options Pricing (weight allowance TBC)

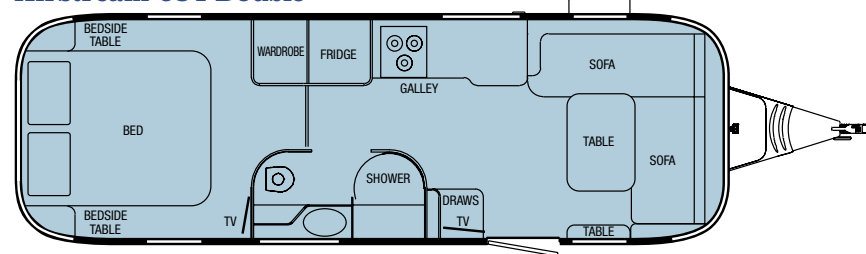
Caravan Mover (Reich) - NB: 2 movers required for twin axle	£995	£1,895
AV upgrade 1 (Sony 15" LCD TV, DVD/CD, Freeview)	£750	£750
AV upgrade 2 (Sony 20" LCD TV, DVD/ CD, Freeview)	£1,075	£1,075
Microwave (Sharp R-26STM, 800W)	£160	£160
Air conditioning (Dometic B1500S, 1.5kW)	£1,150	N/A
Air conditioning (Dometic B2100, 2.1kW)	N/A	£1,300
Inverter (Mobitronic 150W) supplying extra 230v socket	£175	£175
Below floor fresh and water water tanks (each 45L)	N/A	£250
Loose lay carpets	£250	£250
Awning (spec TBC)	TBC	TBC
<b>TOTAL (excl. AV upgrade 1)</b>	<b>£3,805</b>	<b>£5,200</b>

MIRO and optional equipment weights stated are predictions and will be confirmed before production models are released for sale. Airstream specifications are subject to change without notice.

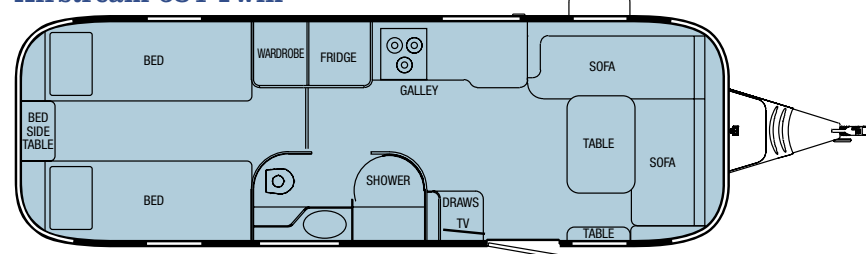
#### Airstream 532



#### Airstream 684 Double



#### Airstream 684 Twin





**Owning an Airstream is participating in the experience that Wally Byam envisioned seventy-five years ago:** “To strive endlessly to stir the venturesome spirit that moves you to follow a rainbow to its end ...”

Today, just as in the beginning, Airstream is a door to great adventure, free-wheeling travel and an appreciation for the simpler pleasures of life. Airstreamers share a great camaraderie, and their passion to experience the journey, rather than rushing through time to a destination, sets them apart as much as the style of their recreational vehicle.

**“Adventure is where you find it, any place, every place, except at home in the rocking chair.”** Wally Byam

# AIRSTREAM™

Airstream Europe Ltd.  
Unit 33A, Comet Road, Moss Side Industrial Estate  
Leyland, Lancashire UK PR26 7QN

ANTHONY SLOCOCK - EUROPE PRODUCT DEVELOPMENT MANAGER  
*phone:* (+44) 1772 623610 *mobile:* (+44) 7768 397957 *email:* [aslocock@airstream.com](mailto:aslocock@airstream.com)  
[www.airstream.com](http://www.airstream.com)

Selected photographs by **Onne Van Der Wal** [www.vanderwal.com](http://www.vanderwal.com)  
Design by **Velocity7** [www.velocity7.com](http://www.velocity7.com)